



**Suzhou Cozy International House Tech Co.,Ltd**

Office Add: Room 1201, NO#3 Building, Jundi Business Plaza, NO.3 Weihua Rd,  
Suzhou Industrial Park, Suzhou, Jiangsu, China. 215122.

Web: [www.cozymodular.com](http://www.cozymodular.com)  
[chinacozy.en.alibaba.com](http://chinacozy.en.alibaba.com)

E-mail: [3068@chinacozy.com](mailto:3068@chinacozy.com)

Tel: +86-512-6272-0236

Fax: +86-512-6299-0759

Remarks: continuous improvements of our products, pictures are only for reference. Version 2024.

**Prefab Bathroom Units  
Modular Bathroom Pods**

# CONTENTS

## 01

### PREFAB BATHROOM UNIT

---

- 003 Product Introduction
- 004 SMC Material
- 005 Comparison

## 02

### PRODUCTS

#### XUZY SERIES

---

- 007 **PHC UB Structure**
- 008 XUZY Models
- 009 BUX1418
- 009 BUX1424
- 010 BUX1518
- 010 BUX1524
- 011 BUX1618
- 011 BUX1624
- 012 BUX1718
- 012 BUX1721
- 013 Color Options
- 014 Standard Accessories

#### JUZY SERIES

---

- 015 JUZY Models
- 016 08/09 series-Shower
- 017 08/09 series-Toilet
- 017 08/09 series-Squat Toilet
- 018 09 series-Toilet
- 018 BUJ1326
- 019 BUJ1420
- 019 BUJ1424
- 020 BUJ1424\_New
- 020 BUJ1616
- 021 BUJ1618
- 021 BUJ1620
- 022 BUJ1622
- 022 BUJ1624F
- 023 BUJ1624Z
- 023 BUJ1820
- 024 Color Options
- 026 Standard Accessories

#### LUZY SERIES

---

- 028 LUZY models
- 029 BUL0816/0818
- 029 BUL0918
- 030 BUL1014
- 030 BUL1020
- 031 BUL1116
- 031 BUL1217
- 032 BUL1218
- 032 BUL1220
- 033 BUL1316/1317/1318
- 033 BUL1319
- 034 BUL1416/1417
- 034 BUL1418
- 035 BUL1420
- 035 BUL1616
- 036 BUL1618
- 036 BUL1620/1624

#### EASY SERIES

---

- 037 EASY Models
- 038 BUA1014/1015/1016/1017
- 038 BUA1114/1115/1116
- 039 BUA1214/1215/1216/1217
- 039 BUA1516/1517/1518

#### BU SERIES

---

- 040 BU Models
- 041 BU1012
- 041 BU1016
- 042 BU1421
- 042 BU1421
- 043 Color Options
- 045 Standard Accessories

#### HOZY SERIES

---

- 049 HOZY Models
- 050 BUH1216
- 050 BUH1316
- 051 BUH1416
- 051 BUH1418
- 052 BUH1420/1620
- 053 Color Options
- 054 Standard Accessories

#### ENJOY SERIES

---

- 055 ENJOY Models
- 056 BUE1022
- 056 BUE1219
- 057 BUE1220
- 057 BUE1224
- 058 BUE1422
- 059 Color Options

#### ANZY SERIES

---

- 060 ANZY Models
- 061 BUN1624
- 061 BUN1622
- 062 BUN1418
- 062 BUN1218
- 063 Color Options

## 03

### TECHNOLOGY ADVANTAGES

---

- 064 Packing&Transportation
- 065 Industrialized Production
- 066 Fast Installation
- 067 Whirlpool Drain
- 068 Waterproof floor
- 069 Six Application Fields
- 070 Oversea Market

## 04

### TECHNICAL INFORMATION

---

- 071 Structure Details
- 072 Horizontal Drain Style
- 072 Vertical Drain Style

## 05

### COMPANY PROFILE

---

- 073 Six Factories
- 074 Company Profile
- 075 History
- 077 Projects
- 079 Partners

# Product Introduction



- ① Ceilings
- ② Walls
- ③ SMC Floor
- ④ Soap Stand
- ⑤ Shower Faucet
- ⑥ Shower Glass Sets
- ⑦ Towel Rail
- ⑧ Toilet
- ⑨ Mirror Cabinet
- ⑩ Bathroom Cabinet

## What is Prefab Bathroom Unit ?

A one-stop solution of using new high-tech materials to produce the whole bathroom floors, walls and ceilings, with dry construction. It integrates the functions of washing, toileting, showering and other sanitary facilities, can be installed only within four hours.



## What material is used for Prefab Bathroom Unit?

Sheet molding compound (SMC), high strength and waterproof, the same material as air plane cabinet.

# SMC Material

	<b>High hardness, Wear-resistance</b>	SMC products are produced by 2500 tons pressing machine and precision steel mold under high temperature and pressure.
	<b>Heat insulation, Heat preservation</b>	Prefab bathroom unit's material is the same as air plane cabinet. The glass fiber material is added to the coating to reduce heat loss, prevent heat conduction and heat radiation, so as to achieve the effect of heat preservation.
	<b>Easy to clean</b>	SMC products have high density, smooth surface, no micro porous, easy to clean, effectively prevent bacterial from reproduction.
	<b>Safety</b>	SMC material is warm and moist, even if accidentally fall down in the bathroom, will not break the head and blood.
	<b>Long service life</b>	SMC material with long service life, stable quality, can be used for more than 20 years, far more than the ordinary family decoration cycle.
	<b>Energy saving and low carbon</b>	SMC products have good performance of thermal insulation no need to install radiator. SMC products are totally green products without toxic and peculiar smell, the release of carbon is much lower than tile products in the whole process of raw material, production, assembling and usage.

# Comparison

## Traditional Bathroom



## Prefab Bathroom Unit



### 01 Energy Consumption

Energy consumption: 342 kw · h / ton,  
1787.5 kg  
Carbon dioxide emissions: 99%



Energy consumption: 180.16 kw · h / ton,  
252.2 kg, **down 47%**  
Carbon dioxide emissions: 14%

### 02 Production

It is difficult to estimate the amount needed and a lot of expensive construction materials are wasted.



**Standardized** factory production, materials are used efficiently and waste is reduced.

### 03 Construction Site

The construction period is long, loud noise, construction waste, difficult to clean up.



Dry construction at site, **fast installation**, no noise, no dust in the construction process. **Construction efficiency increased by 70%!**

### 04 Construction Material

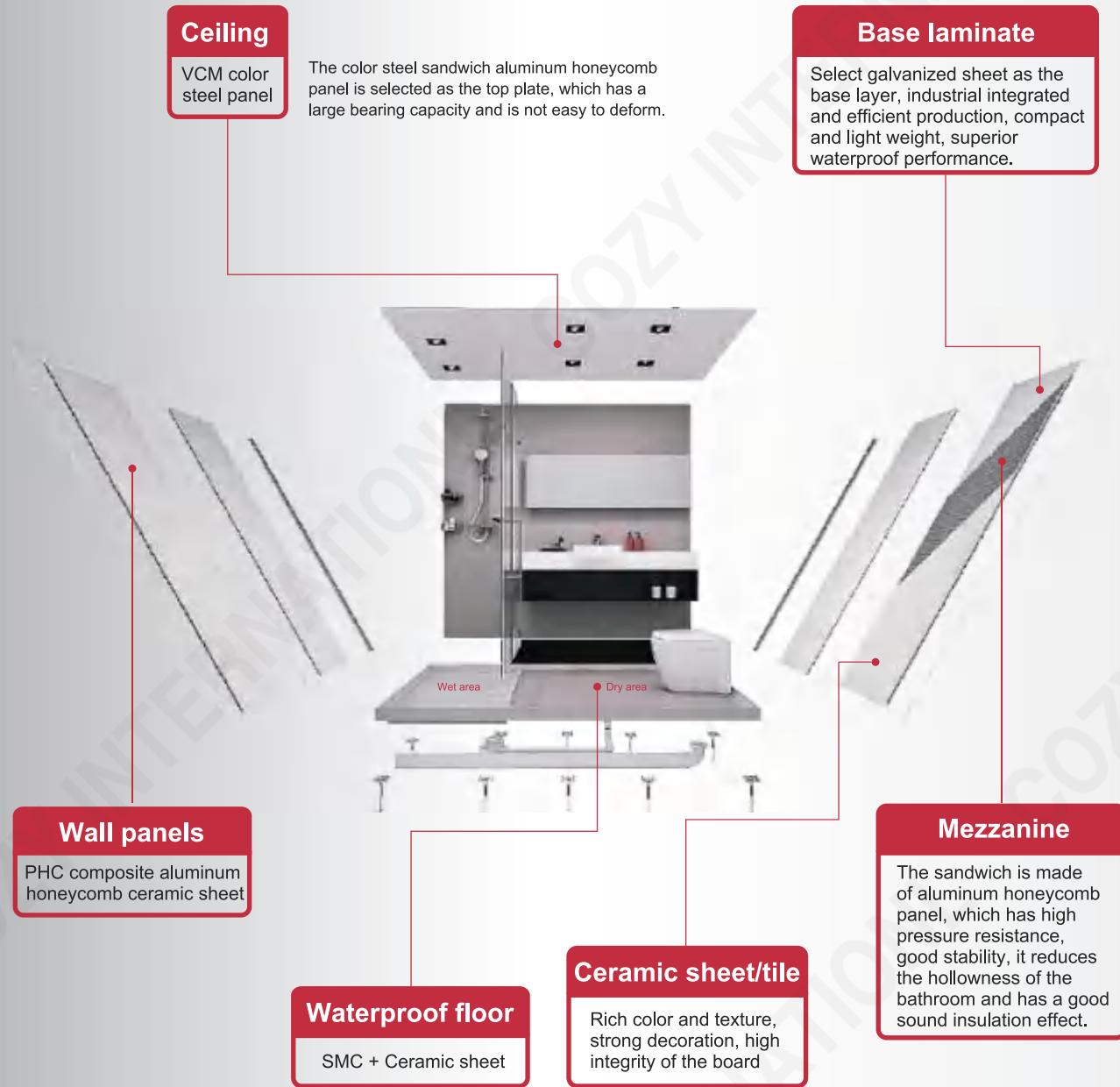
Many kinds of materials and complex, may contain formaldehyde, harmful to the user's body.



**Environment-friendly** materials, no harmful gas emissions, no odor, after installation can be immediately living. **Materials saved by 30%!**

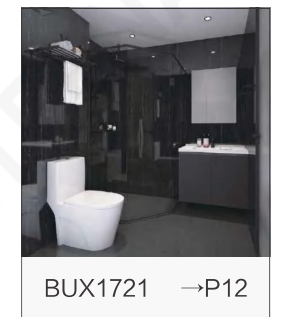
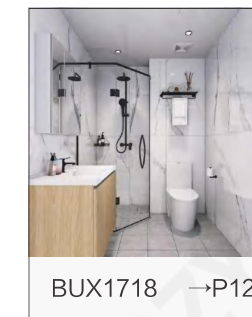
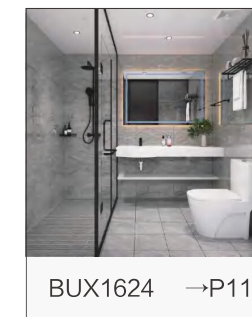
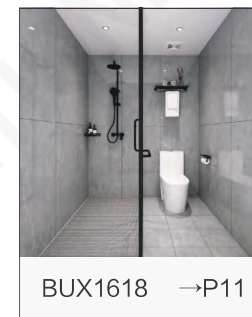
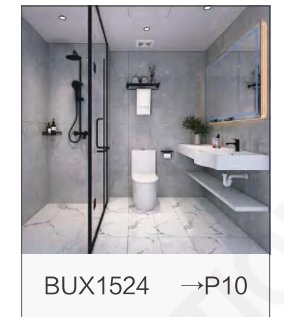
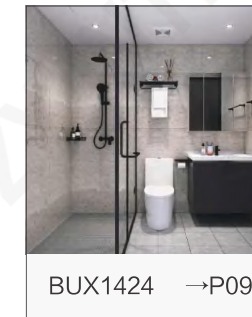
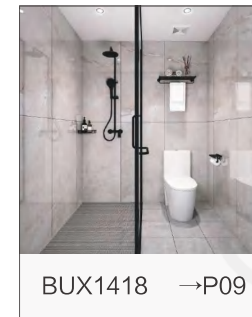


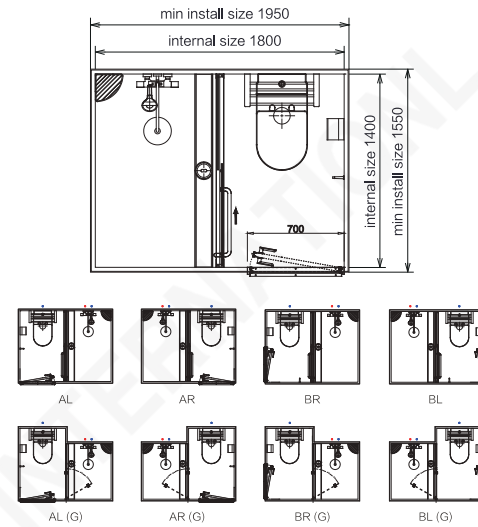
# PHC UB Structure



# XUZY Models

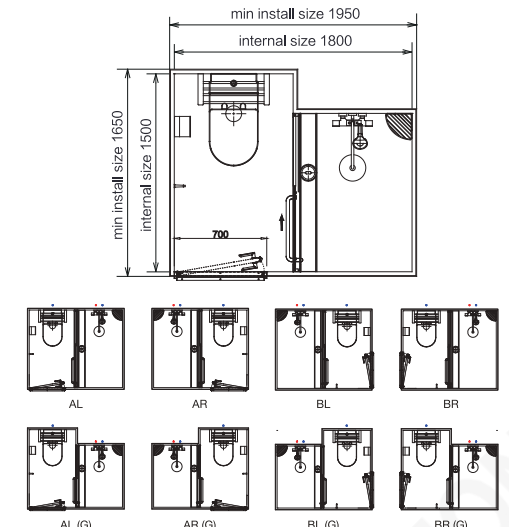
XUZY SERIES  
P8-P14





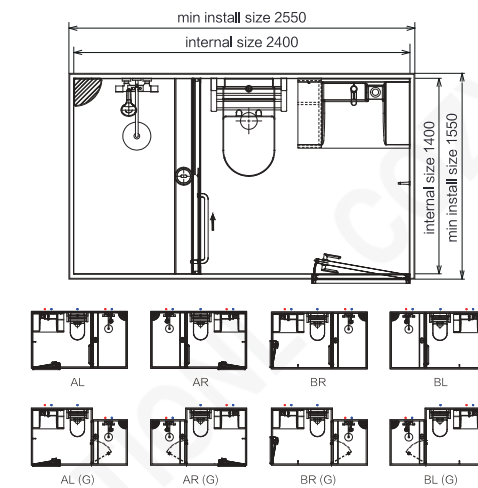
## BUX1418

Dimensions	Internal	External
Width	1400mm	1550mm
Length	1800mm	1950mm
Height	2400mm	2700mm/2850mm
Available area	2.52m <sup>2</sup>	
Weight	≤500kg	
Shipping Info.	40HC-Flat Pack ( 30 sets )	



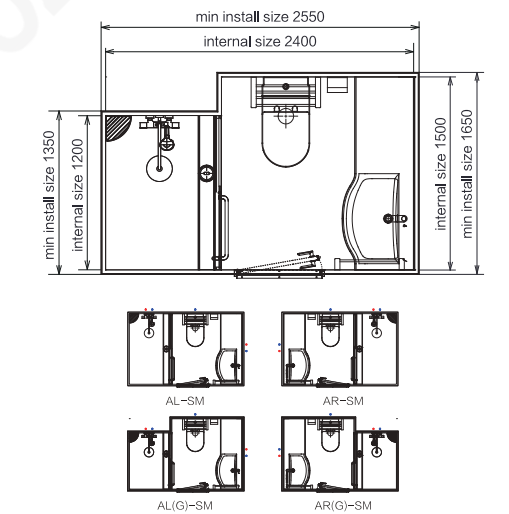
## BUX1518

Dimensions	Internal	External
Width	1500mm	1650mm
Length	1800mm	1950mm
Height	2400mm	2700mm/2850mm
Available area	2.70m <sup>2</sup>	
Weight	≤550kg	
Shipping Info.	40HC-Flat Pack ( 28 sets )	



## BUX1424

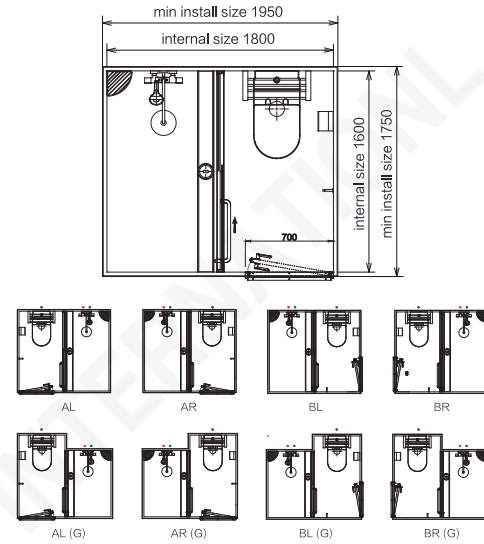
Dimensions	Internal	External
Width	1400mm	1550mm
Length	2400mm	2550mm
Height	2400mm	2700mm/2850mm
Available area	3.36m <sup>2</sup>	
Weight	≤550kg	
Shipping Info.	40HC-Flat Pack ( 28 sets )	



## BUX1524

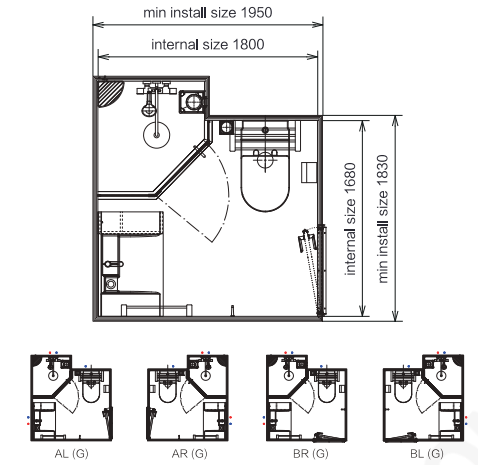
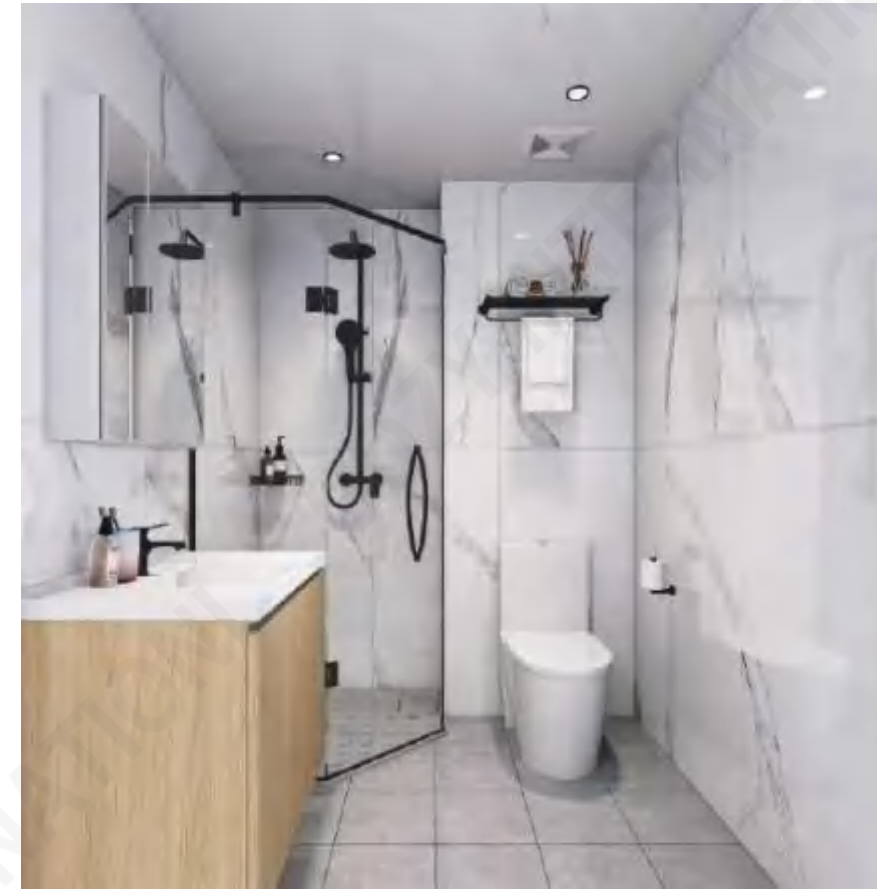
Dimensions	Internal	External
Width	1500mm	1650mm
Length	2400mm	2550mm
Height	2400mm	2700mm/2850mm
Available area	3.60m <sup>2</sup>	
Weight	≤600kg	
Shipping Info.	40HC-Flat Pack ( 26 sets )	





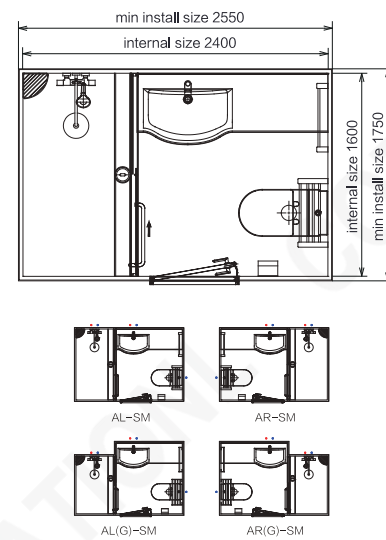
## BUX1618

Dimensions	Internal	External
Width	1600mm	1750mm
Length	1800mm	1950mm
Height	2400mm	2700mm/2850mm
Available area	2.88m <sup>2</sup>	
Weight	≤650kg	
Shipping Info.	40HC-Flat Pack ( 26 sets )	



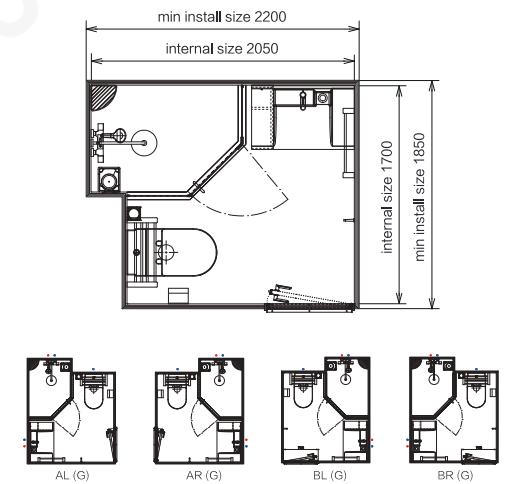
## BUX1718

Dimensions	Internal	External
Width	1680mm	1830mm
Length	1800mm	1950mm
Height	2400mm	2700mm/2850mm
Available area	3.06m <sup>2</sup>	
Weight	≤750kg	
Shipping Info.	40HC-Flat Pack ( 22 sets )	



## BUX1624

Dimensions	Internal	External
Width	1600mm	1750mm
Length	2400mm	2550mm
Height	2400mm	2700mm/2850mm
Available area	3.84m <sup>2</sup>	
Weight	≤700kg	
Shipping Info.	40HC-Flat Pack ( 24 sets )	



## BUX1721

Dimensions	Internal	External
Width	1700mm	1850mm
Length	2050mm	2200mm
Height	2400mm	2700mm/2850mm
Available area	3.57m <sup>2</sup>	
Weight	≤800kg	
Shipping Info.	40HC-Flat Pack ( 20sets )	

# Color Options

Wall colors · Ceramic sheet / tile

Xuzy series



Poppy Light Gray



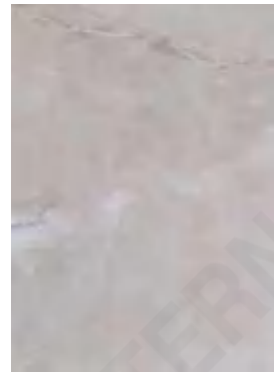
Calacata



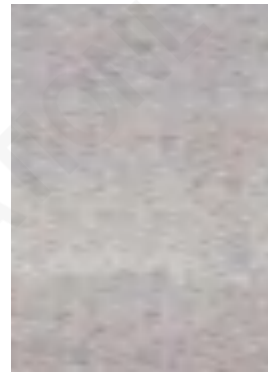
Black



Quicksand Ash



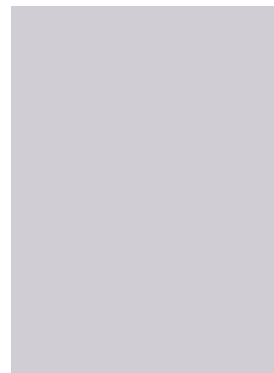
Cream-yellow



Jinmao Ash

Floor colors · Ceramic sheet / tile

Xuzy series



Light Gray



Dark Gray



Poppy Light Gray



Calacata

# Standard Accessories

— XUZY SERIES

Faucet Shower

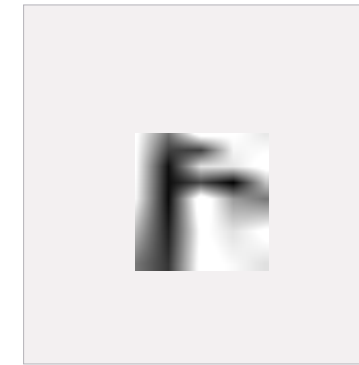


NO: 050302120  
Name: shower faucet set

Ceramic Toilet



NO: 050101205  
Name: toilet 8651



NO: 050301081  
Name: basin faucet

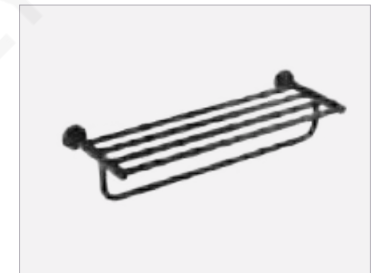
Hardwares



NO: 070104065  
Name: triangle soap rack



NO: 070101182  
Name: towel rail  
Spec: L=500mm



NO: 070102126  
Name: shower rail  
Spec: L=500mm



NO: 070105178  
Name: paper holder



NO: 120401064  
Name: exhaust fan

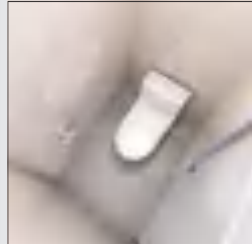


# JUZY Models

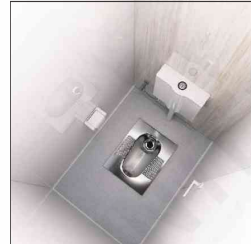
JUZY SERIES  
P15-P27



08/09 series-Shower  
BUJ0812/0911/0912/  
0914/0915 → P16



08/09 series-Toilet  
BUJ0812/0911/0912/  
0914/0915 → P16



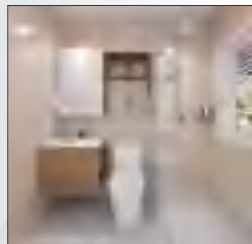
BUJ0912-Squat Toilet  
→ P17



09 series-Toilet  
BUJ0911/0912/0914/  
0915 → P17



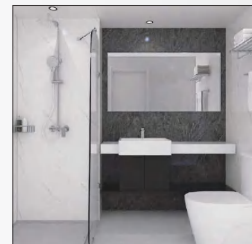
BUJ1326 → P18



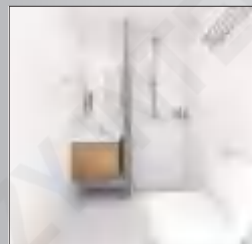
BUJ1420 → P18



BUJ1424 → P19



BUJ1424\_New → P19



BUJ1616 → P20



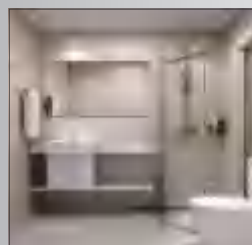
BUJ1618 → P20



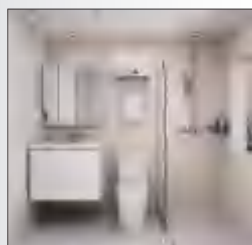
BUJ1620 → P21



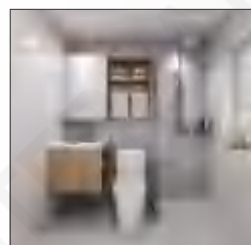
BUJ1622 → P21



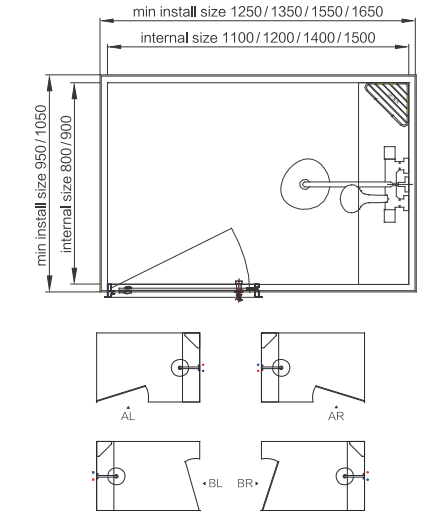
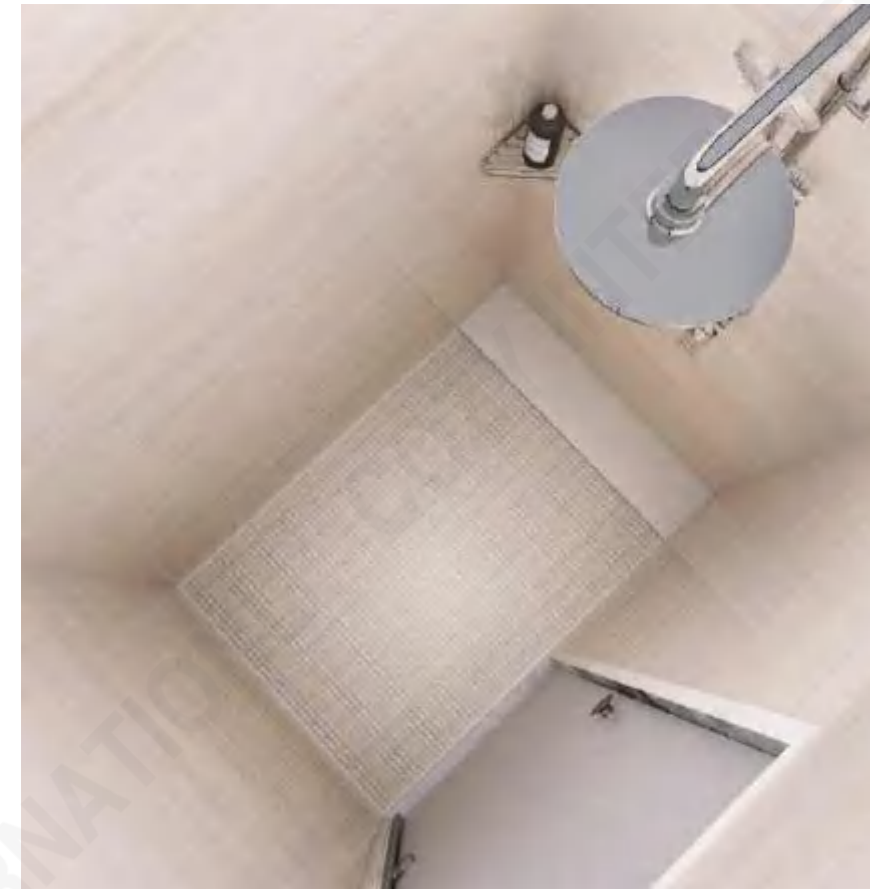
BUJ1624Z → P22



BUJ1624F → P22

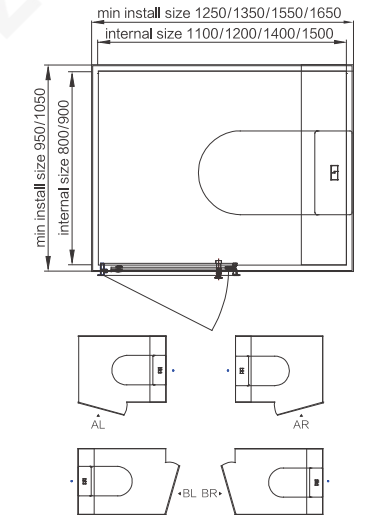


BUJ1820 → P23



## 08/09 series-Shower \_0812/0911/0912/0914/0915

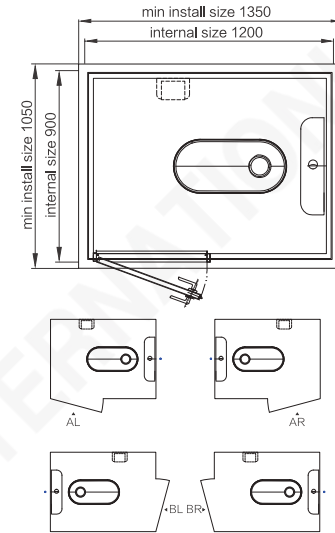
Dimensions	Internal	External
Width	800/900 mm	950/1050 mm
Length	1100/1200/1400/1500 mm	1250/1350/1550/1650 mm
Height	2300 mm	2600 mm/2750 mm
Available area	0.96 m <sup>2</sup> /0.99 m <sup>2</sup> /1.08 m <sup>2</sup> /1.26 m <sup>2</sup> /1.35 m <sup>2</sup>	
Weight	≤ 160 kg	
Shipping Info.	40HC-Flat Pack(60 sets), Assembled(18/20/18/16/14 sets)	



## 08/09 series-Toilet \_0812/0911/0912/0914/0915

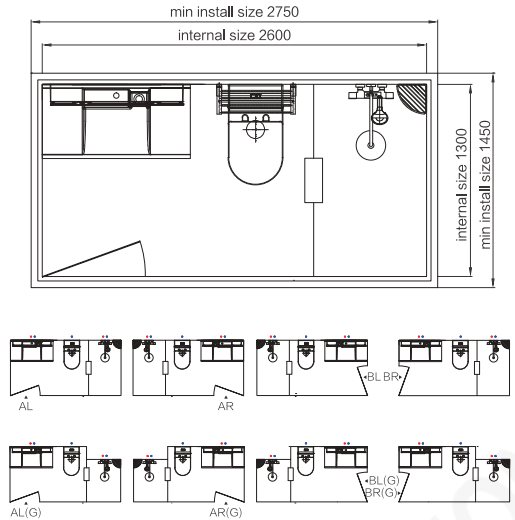
Dimensions	Internal	External
Width	800/900 mm	950/1050 mm
Length	1100/1200/1400/1500 mm	1250/1350/1550/1650 mm
Height	2300 mm	2600 mm/2750 mm
Available area	0.96 m <sup>2</sup> /0.99 m <sup>2</sup> /1.08 m <sup>2</sup> /1.26 m <sup>2</sup> /1.35 m <sup>2</sup>	
Weight	≤ 160 kg	
Shipping Info.	40HC-Flat Pack(60 sets), Assembled(18/20/18/16/14 sets)	





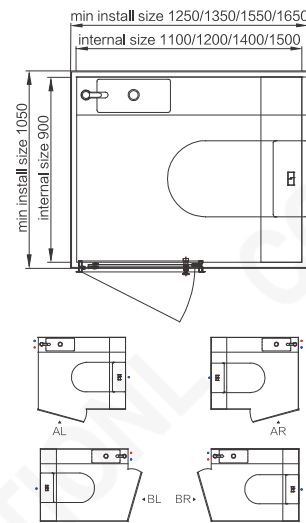
### BUJ0912-Squat Toilet

Dimensions	Internal	External
Width	900 mm	1050 mm
Length	1200 mm	1350 mm
Height	2300 mm	2600 mm/2750 mm
Available area	1.08 m <sup>2</sup>	
Weight	≤160 kg	
Shipping Info.	40HC-Flat Pack (60 sets), Assembled (18 sets)	



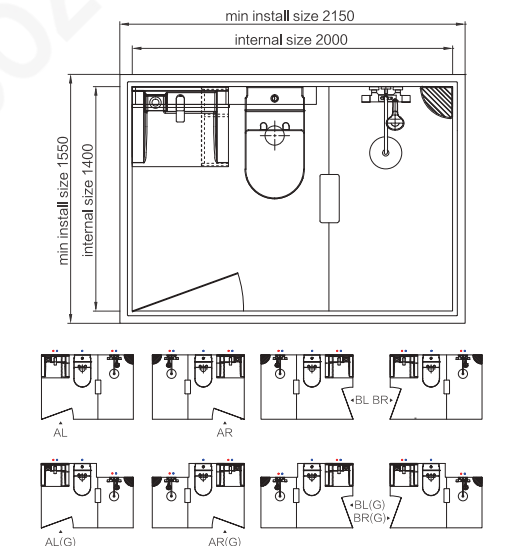
### BUJ1326

Dimensions	Internal	External
Width	1300 mm	1450 mm
Length	2600 mm	2750 mm
Height	2300 mm	2600 mm/2750 mm
Available area	3.38 m <sup>2</sup>	
Weight	≤350 kg	
Shipping Info.	40HC-Flat Pack (24 sets), Assembled (4 sets)	



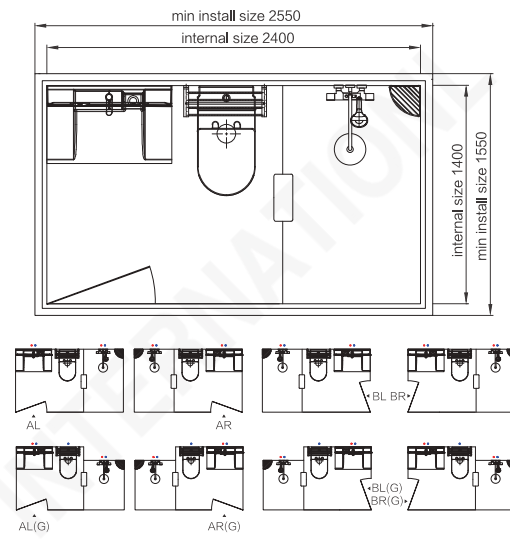
### 09 series-Toilet \_0911/0912/0914/0915

Dimensions	Internal	External
Width	900 mm	1050 mm
Length	1100/1200/1400/1500 mm	1250/1350/1550/1650 mm
Height	2300 mm	2600 mm/2750 mm
Available area	0.99 m <sup>2</sup> /1.08 m <sup>2</sup> /1.26 m <sup>2</sup> /1.35 m <sup>2</sup>	
Weight	≤200 kg	
Shipping Info.	40HC-Flat Pack(60 sets), Assembled(20/18/16/14 sets)	



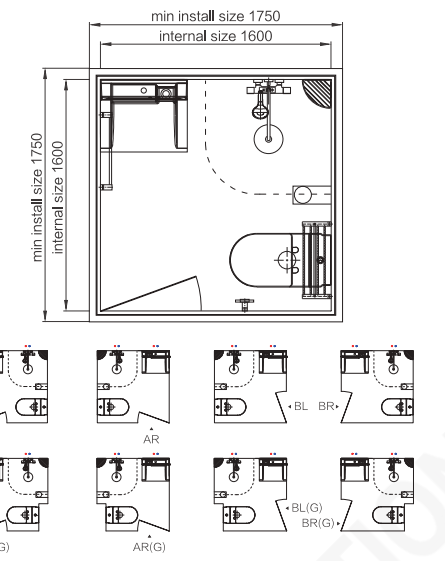
### BUJ1420

Dimensions	Internal	External
Width	1400 mm	1550 mm
Length	2000 mm	2150 mm
Height	2300 mm	2600 mm/2750 mm
Available area	2.80 m <sup>2</sup>	
Weight	≤320 kg	
Shipping Info.	40HC-Flat Pack (35 sets), Assembled (8 sets)	



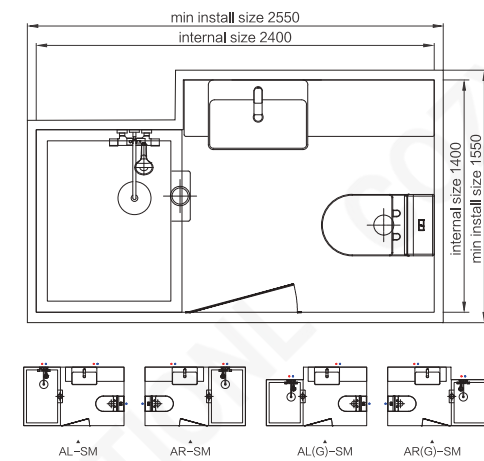
## BUJ1424

Dimensions	Internal	External
Width	1400 mm	1550 mm
Length	2400 mm	2550 mm
Height	2300 mm	2600 mm / 2750 mm
Available area	3.36 m <sup>2</sup>	
Weight	≤ 340 kg	
Shipping Info.	40HC-Flat Pack ( 28 sets ), Assembled ( 4 sets )	



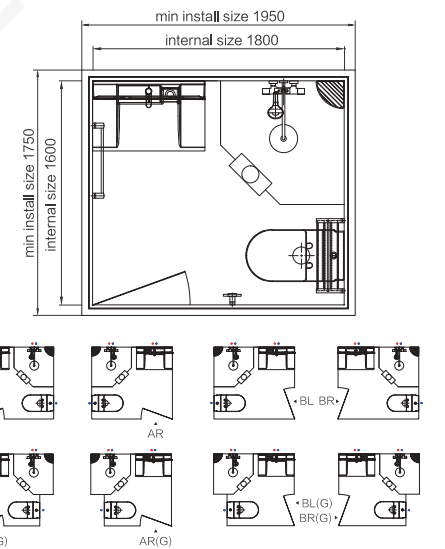
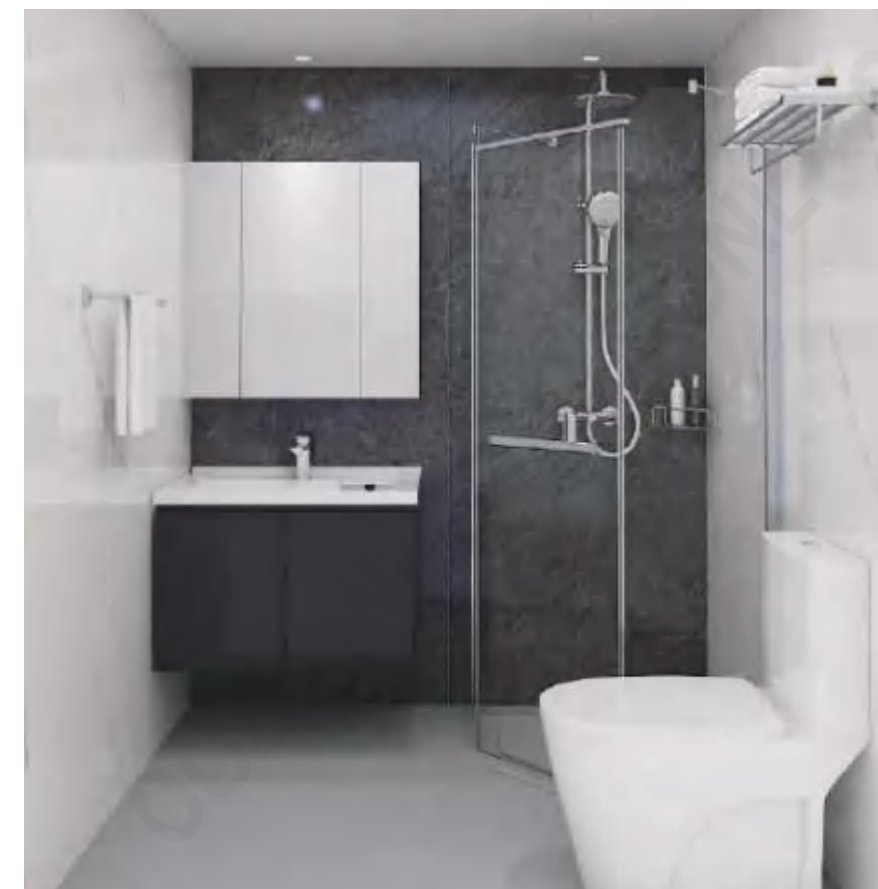
## BUJ1616

Dimensions	Internal	External
Width	1600 mm	1750 mm
Length	1600 mm	1750 mm
Height	2300 mm	2600 mm / 2750 mm
Available area	2.56 m <sup>2</sup>	
Weight	≤ 290 kg	
Shipping Info.	40HC-Flat Pack ( 35 sets ), Assembled ( 6 sets )	



## BUJ1424\_New

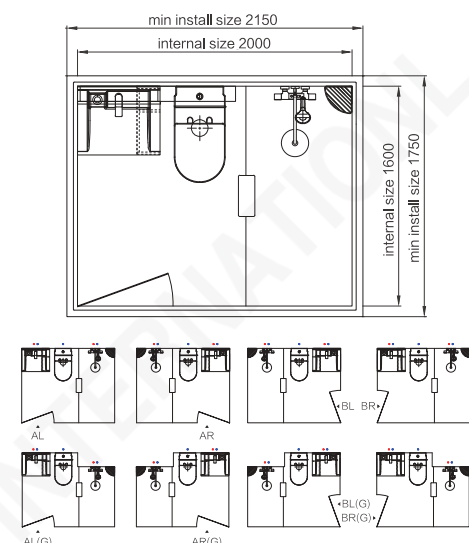
Dimensions	Internal	External
Width	1400 mm	1550 mm
Length	2400 mm	2550 mm
Height	2300 mm	2600 mm / 2750 mm
Available area	3.36 m <sup>2</sup>	
Weight	≤ 340 kg	
Shipping Info.	40HC-Flat Pack ( 26 sets ), Assembled ( 4 sets )	



## BUJ1618

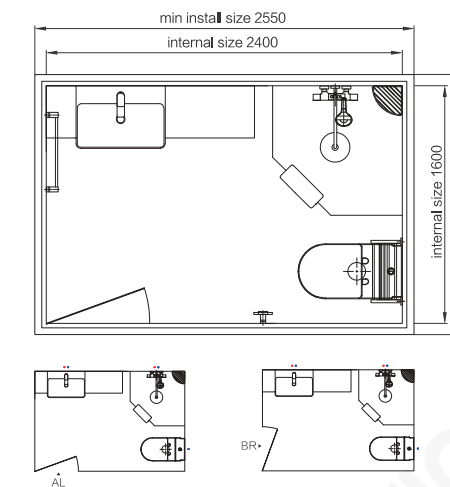
Dimensions	Internal	External
Width	1600 mm	1750 mm
Length	1800 mm	1950 mm
Height	2300 mm	2600 mm / 2750 mm
Available area	2.88 m <sup>2</sup>	
Weight	≤ 290 kg	
Shipping Info.	40HC-Flat Pack ( 35 sets ), Assembled ( 6 sets )	





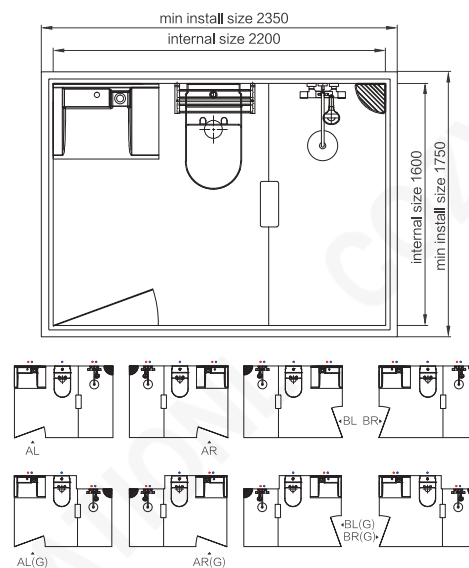
## BUJ1620

Dimensions	Internal	External
Width	1600 mm	1750 mm
Length	2000 mm	2150 mm
Height	2300 mm	2600 mm / 2750 mm
Available area	3.20 m <sup>2</sup>	
Weight	≤ 340 kg	
Shipping Info.	40HC-Flat Pack (30 sets), Assembled (6 sets)	



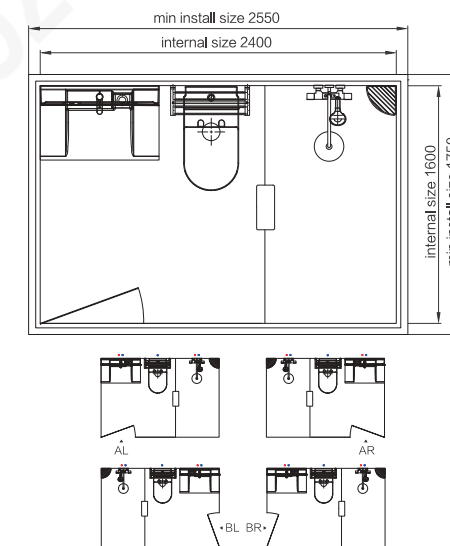
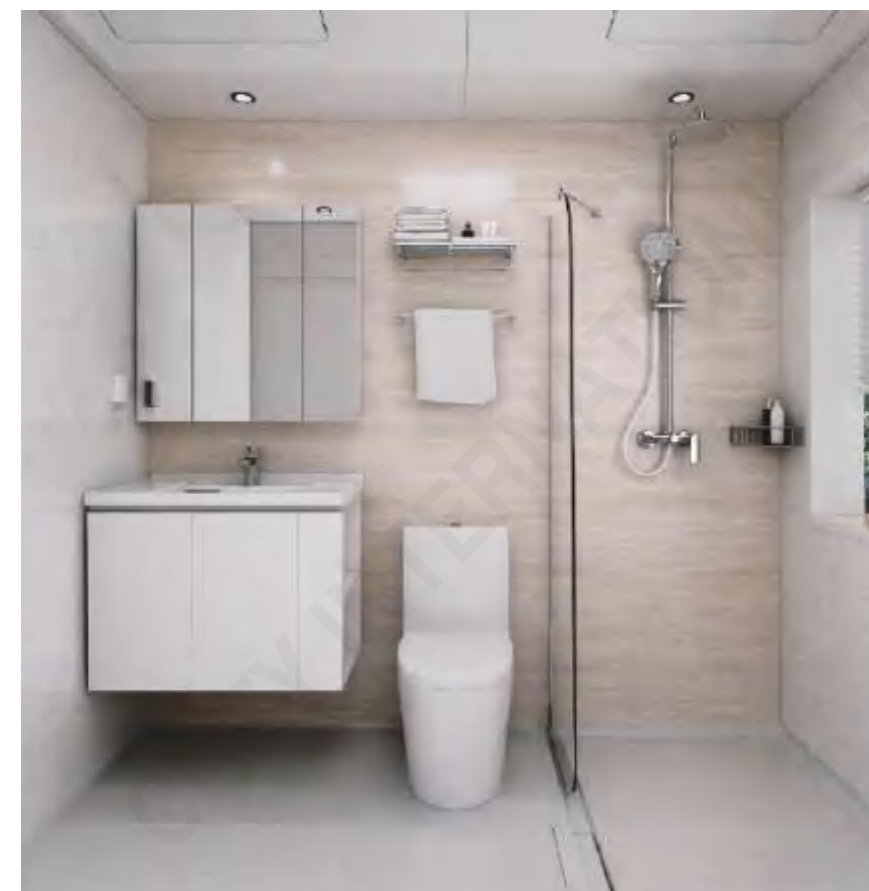
## BUJ1624Z

Dimensions	Internal	External
Width	1600 mm	1750 mm
Length	2400 mm	2550 mm
Height	2300 mm	2600 mm / 2750 mm
Available area	3.84 m <sup>2</sup>	
Weight	≤ 380 kg	
Shipping Info.	40HC-Flat Pack (25 sets), Assembled (4 sets)	



## BUJ1622

Dimensions	Internal	External
Width	1600 mm	1750 mm
Length	2200 mm	2350 mm
Height	2300 mm	2600 mm / 2750 mm
Available area	3.52 m <sup>2</sup>	
Weight	≤ 360 kg	
Shipping Info.	40HC-Flat Pack (26 sets), Assembled (5 sets)	



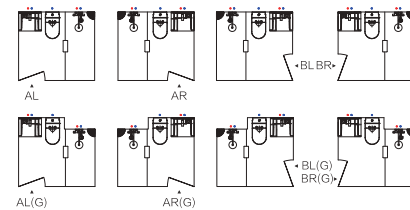
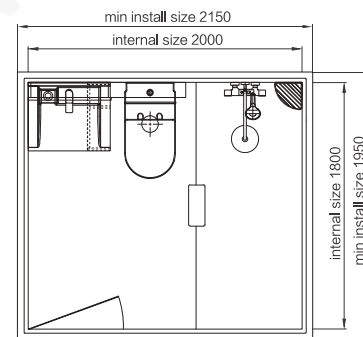
## BUJ1624F

Dimensions	Internal	External
Width	1600 mm	1750 mm
Length	2400 mm	2550 mm
Height	2300 mm	2600 mm / 2750 mm
Available area	3.84 m <sup>2</sup>	
Weight	≤ 370 kg	
Shipping Info.	40HC-Flat Pack (25 sets), Assembled (4 sets)	

# Color Options

SMC wall colors

Juzy series

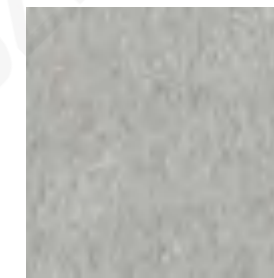


## BUJ1820

Dimensions	Internal	External
Width	1800 mm	1950 mm
Length	2000 mm	2150 mm
Height	2300 mm	2600 mm / 2750 mm
Available area	3.60 m <sup>2</sup>	
Weight	≤ 370 kg	
Shipping Info.	40HC-Flat Pack (25 sets), Assembled (6 sets)	



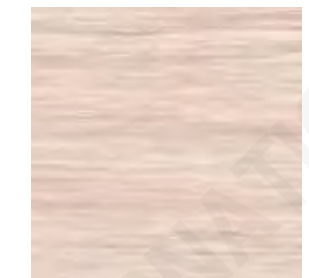
Mirror Wood Stone



Mirror Sea Fog



Mirror Jazz White



Caroy Wood



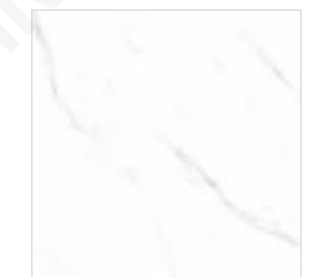
Mirror Walnut



Mirror Light Oak



Mirror Dolomite



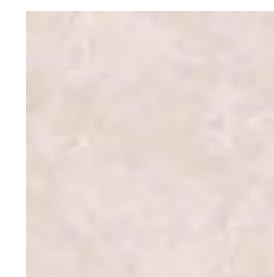
Fishbelly White



Stone



Mirror Light Oak



Mirror Dolomite

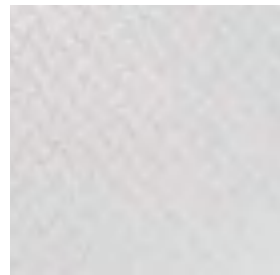


Wood

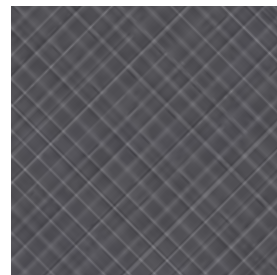
# Standard Accessories

## SMC floor colors & pattern

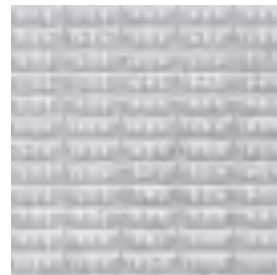
Juzy series



Wave Light Grey  
(in common use)



Diamond Square Gray



Long Grey Dot  
(only for 08, 09)

## Bathroom cabinet color

Juzy series



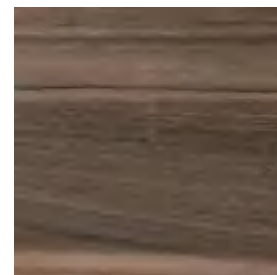
White



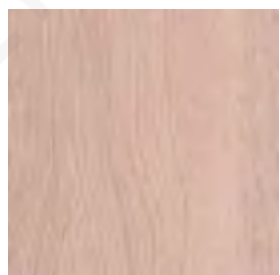
Grey



Dark Grey



Walnut Color



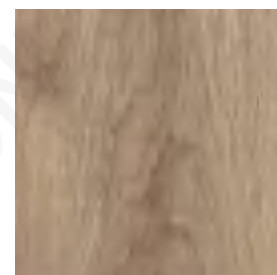
Balaqui



XD-1342



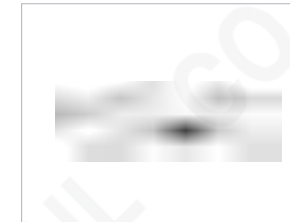
Oak-2



Oak-3

## JUZY SERIES

### Bathroom Accessories



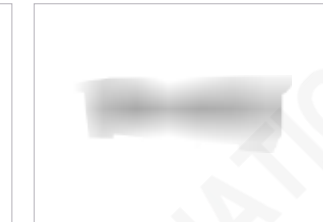
NO: 070104086  
Name: triangle soap rack  
Spec: stainless steel



NO: 070102117  
Name: towel rail  
Spec: stainless steel  
L=500mm

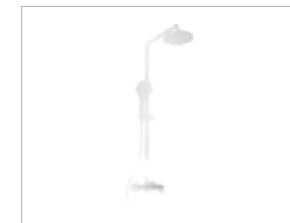


NO: 070102116  
Name: shower rail  
Spec: stainless steel  
L=500mm



NO: 070105019  
Name: paper holder  
Spec: ABS

### Faucet Shower



NO: 050302097  
Name: shower faucet set  
Spec: copper chrome plating



NO: 050301091  
Name: basin faucet  
Spec: copper chrome plating

### Artificial Stone Wash Basin



Name: wash basin  
Spec: ceramic



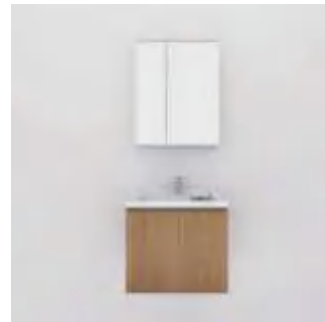
Name: wash basin  
Spec: artificial stone  
L=1400mm



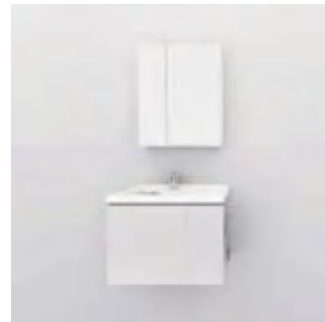
NO: 050101205  
Name: toilet 8651



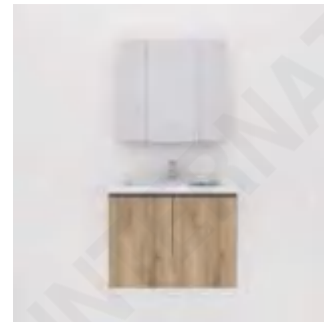
**Basin Cabinet**



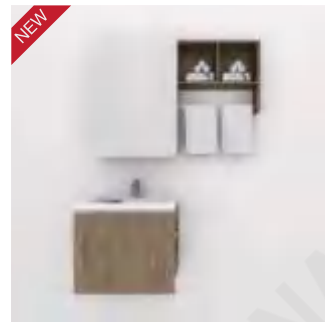
Name: basin cabinet\_600  
Spec: 600shower cabin,,  
600mirror, wash basin



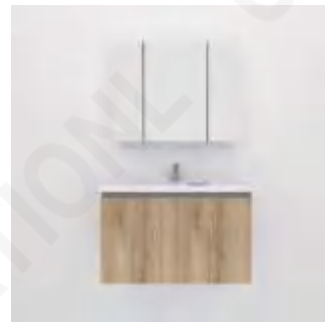
Name: basin cabinet\_700  
Spec: 700shower cabinet,  
600mirror, wash basin



Name: basin cabinet\_800  
Spec: 800shower cabinet,  
800mirror, wash basin



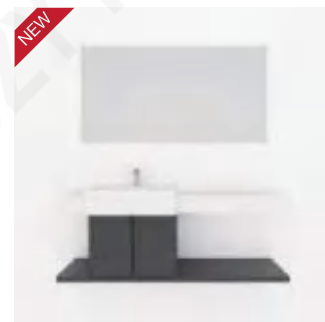
Name: basin cabinet\_600  
Spec: 1150shower cabinet,  
600mirror, wash basin



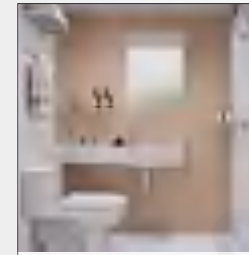
Name: basin cabinet\_800/1000  
Spec: 800/1000shower cabinet,  
800/1000mirror,  
wash basin



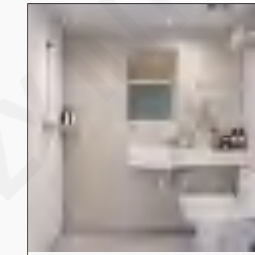
Name: basin cabinet\_900/1200  
Spec: 900/1200shower cabinet,  
500\*700mirror,  
wash basin



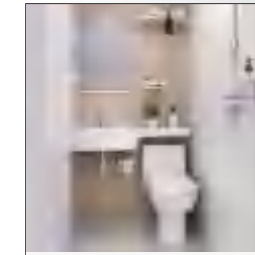
Name: basin cabinet\_1400  
Spec: 1400shower cabinet,  
700\*1350mirror,  
wash basin



BUL0816/0818→P29



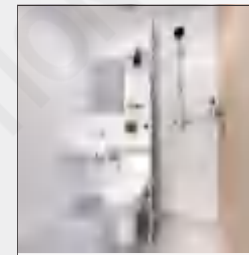
BUL0918 →P29



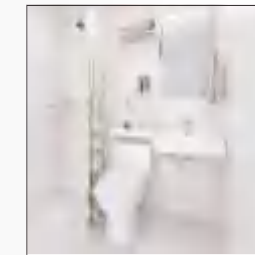
BUL1014 →P30



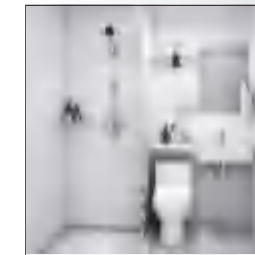
BUL1020 →P30



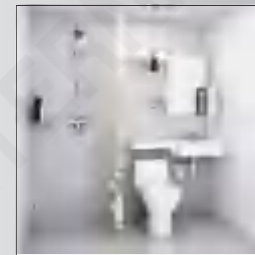
BUL1116 →P31



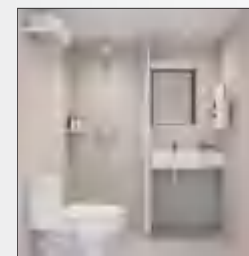
BUL1217 →P31



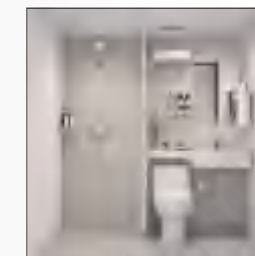
BUL1218 →P32



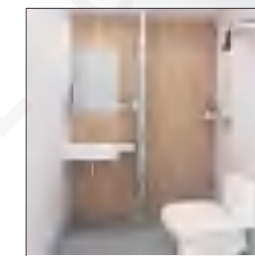
BUL1220 →P32



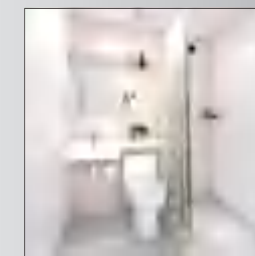
BUL1316/1317/1318  
→P33



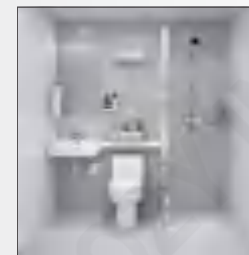
BUL1319 →P33



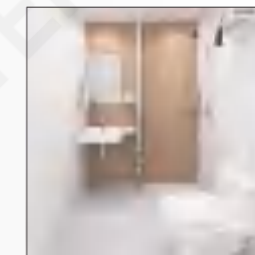
BUL1416/1417 →P34



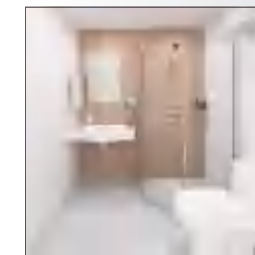
BUL1418 →P34



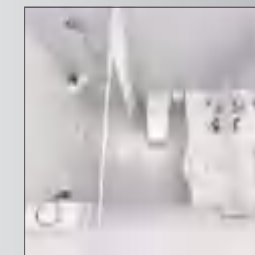
BUL1420 →P35



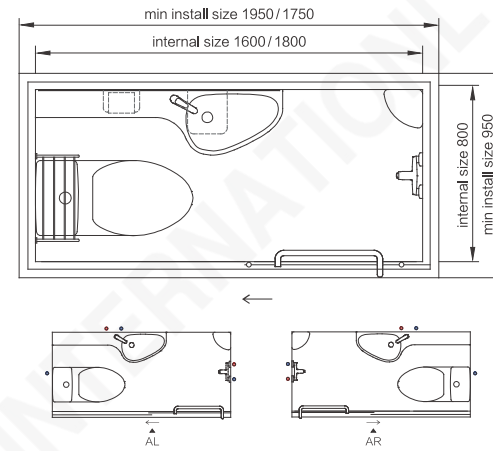
BUL1616 →P35



BUL1618 →P36

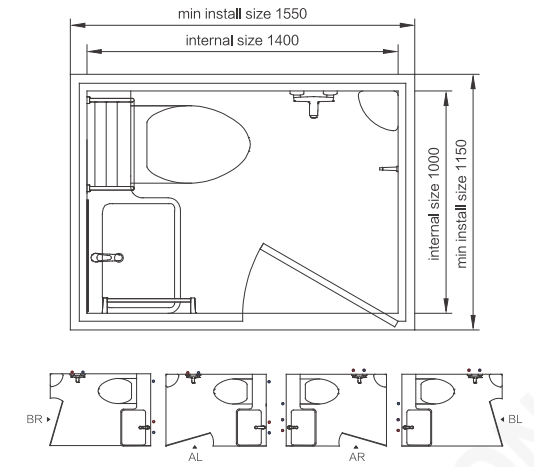


BUL1620/1624 →P36



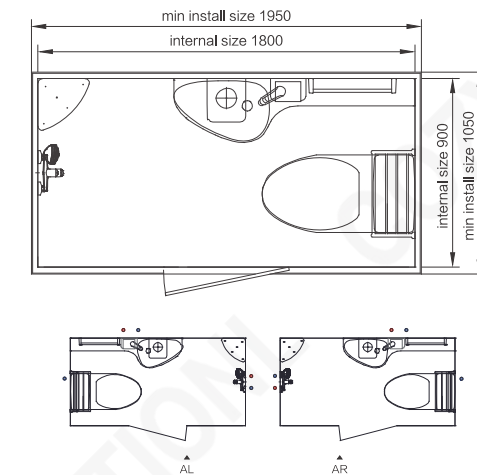
## BUL0816/0818

Dimensions	Internal	External
Width	800 mm	950 mm
Length	1600 mm/1800 mm	1750mm/1950mm
Height	2000 mm/2200 mm	2500mm/2650mm
Available area	1,28 m <sup>2</sup> /1,44 m <sup>2</sup>	
Weight	≤200 kg	
Shipping Info.	40HC-Flat Pack (58 sets), Assembled (14 sets)	



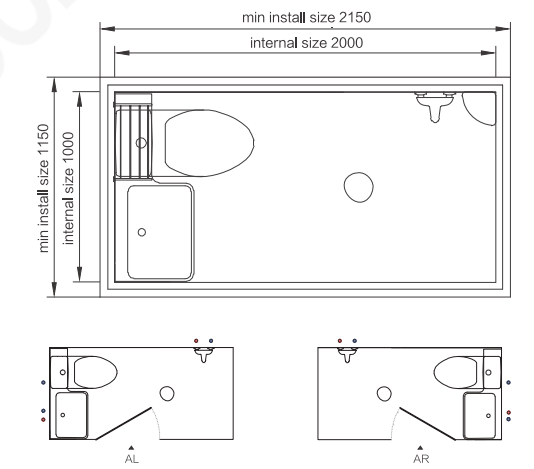
## BUL1014

Dimensions	Internal	External
Width	1000 mm	1150 mm
Length	1400 mm	1550 mm
Height	2000mm/2200mm	2500mm/2650mm
Available area	1,40 m <sup>2</sup>	
Weight	≤200 kg	
Shipping Info.	40HC-Flat Pack (50 sets), Assembled (11 sets)	



## BUL0918

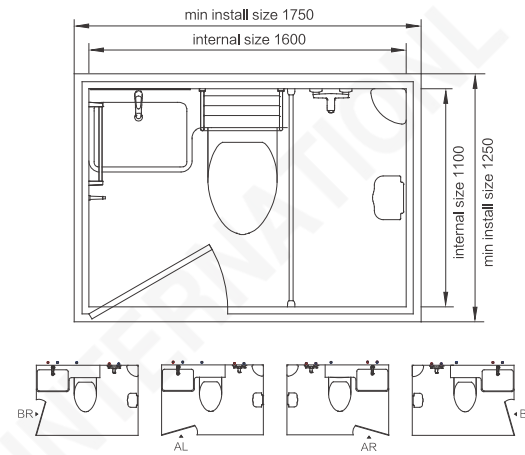
Dimensions	Internal	External
Width	900 mm	1050 mm
Length	1800 mm	1950 mm
Height	2000 mm/2200 mm	2500 mm/2650 mm
Available area	1,62 m <sup>2</sup>	
Weight	≤210 kg	
Shipping Info.	40HC-Flat Pack (55 sets), Assembled (12 sets)	



## BUL1020

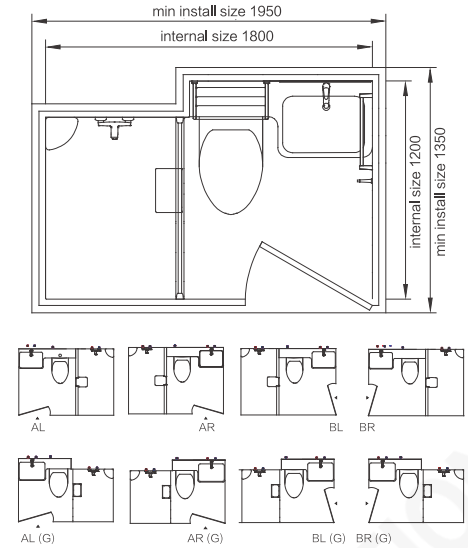
Dimensions	Internal	External
Width	1000 mm	1150 mm
Length	2000 mm	2150 mm
Height	2000 mm/2200 mm	2500 mm/2650 mm
Available area	2,00 m <sup>2</sup>	
Weight	≤250 kg	
Shipping Info.	40HC-Flat Pack (48 sets), Assembled (11 sets)	





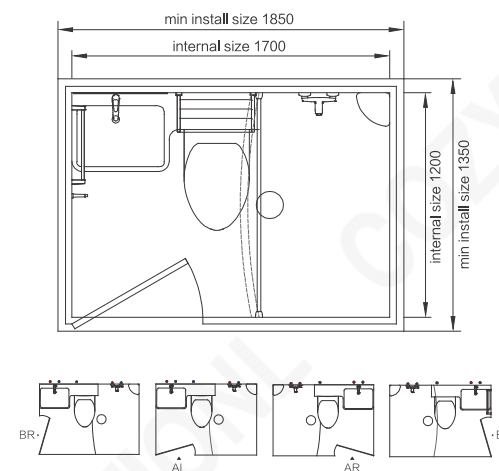
## BUL1116

Dimensions	Internal	External
Width	1100 mm	1250 mm
Length	1600 mm	1750 mm
Height	2000 mm / 2200 mm	2500 mm / 2650 mm
Available area	1.76 m <sup>2</sup>	
Weight	≤ 220 kg	
Shipping Info.	40HC-Flat Pack (48 sets), Assembled (10 sets)	



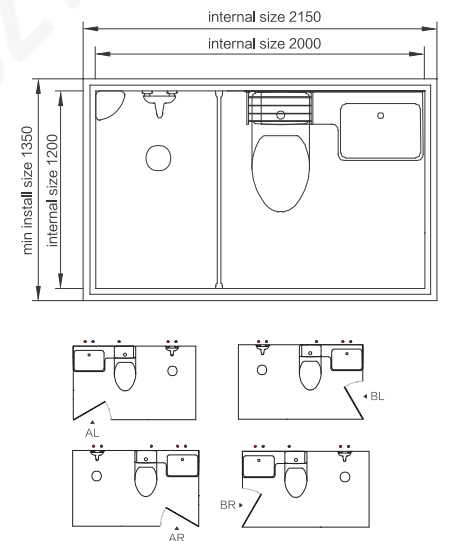
## BUL1218

Dimensions	Internal	External
Width	1200 mm	1350 mm
Length	1800 mm	1950 mm
Height	2000 mm / 2200 mm	2500 mm / 2650 mm
Available area	2.16 m <sup>2</sup>	
Weight	≤ 250 kg	
Shipping Info.	40HC-Flat Pack (45 sets), Assembled (9 sets)	



## BUL1217

Dimensions	Internal	External
Width	1200 mm	1350 mm
Length	1700 mm	1850 mm
Height	2000 mm / 2200 mm	2500 mm / 2650 mm
Available area	2.04 m <sup>2</sup>	
Weight	≤ 250 kg	
Shipping Info.	40HC-Flat Pack (45 sets), Assembled (9 sets)	

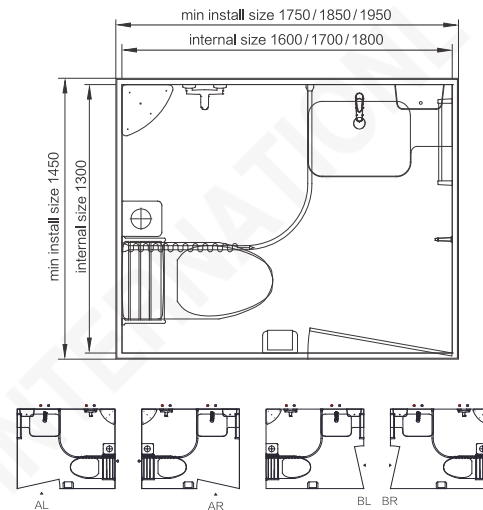


## BUL1220

Dimensions	Internal	External
Width	1200 mm	1350 mm
Length	2000 mm	2150 mm
Height	2000 mm / 2200 mm	2500 mm / 2650 mm
Available area	2.40 m <sup>2</sup>	
Weight	≤ 250 kg	
Shipping Info.	40HC-Flat Pack (44 sets), Assembled (9 sets)	

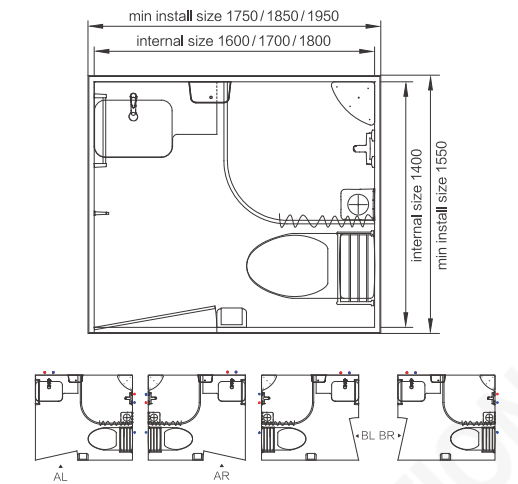


NEW



### BUL1316 / 1317 / 1318

Dimensions	Internal	External
Width	1300 mm	1450 mm
Length	1600 / 1700 / 1800 mm	1750 / 1850 / 1950 mm
Height	2000 mm / 2200 mm	2500 mm / 2650 mm
Available area	2,08 / 2,21 / 2,34 m <sup>2</sup>	
Weight	≤ 240 kg	
Shipping Info.	40HC-Flat Pack (42 sets), Assembled (8 sets)	

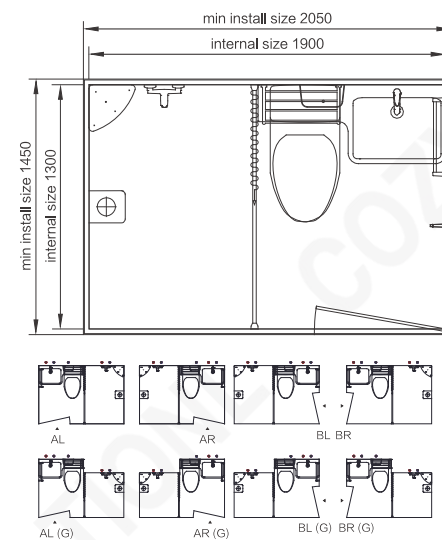


### BUL1416 / 1417

Dimensions	Internal	External
Width	1400 mm	1550 mm
Length	1600 mm / 1700 mm	1750 mm / 1850 mm
Height	2000 mm / 2200 mm	2500 mm / 2650 mm
Available area	2,24 / 2,38 m <sup>2</sup>	
Weight	≤ 240 kg	
Shipping Info.	40HC-Flat Pack (42 sets), Assembled (8 sets)	

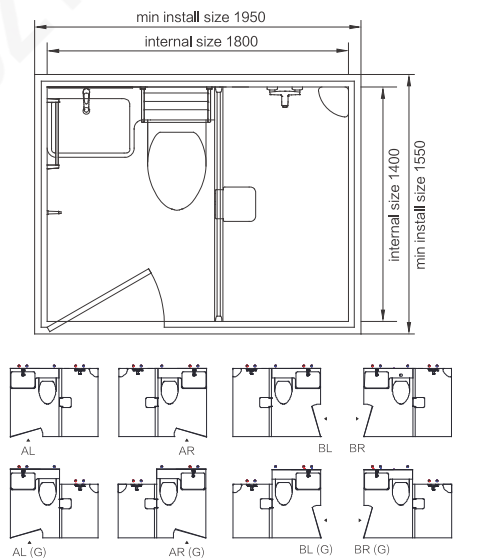


NEW



### BUL1319

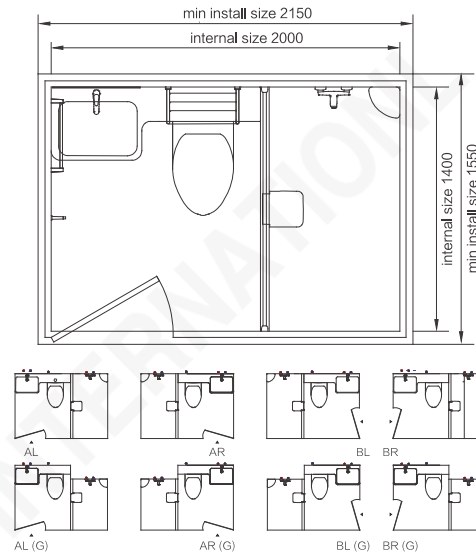
Dimensions	Internal	External
Width	1300 mm	1450 mm
Length	1900 mm	2050 mm
Height	2000 mm / 2200 mm	2500 mm / 2650 mm
Available area	2,47 m <sup>2</sup>	
Weight	≤ 250 kg	
Shipping Info.	40HC-Flat Pack (40 sets), Assembled (8 sets)	



### BUL1418

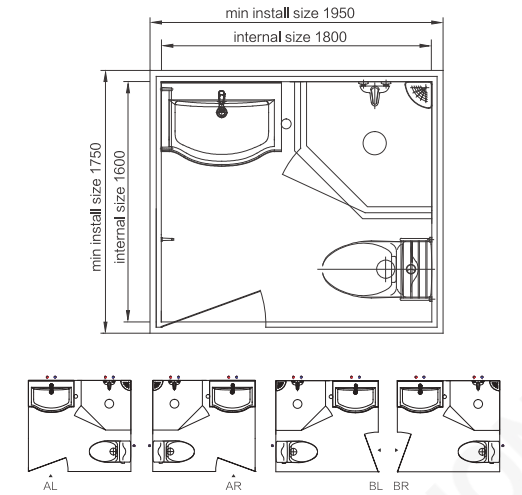
Dimensions	Internal	External
Width	1400 mm	1550 mm
Length	1800 mm	1950 mm
Height	2000 mm / 2200 mm	2500 mm / 2650 mm
Available area	2,52 m <sup>2</sup>	
Weight	≤ 250 kg	
Shipping Info.	40HC-Flat Pack (40 sets), Assembled (8 sets)	





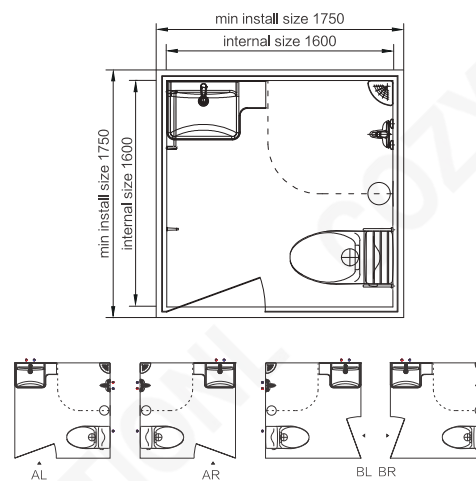
## BUL1420

Dimensions	Internal	External
Width	1400 mm	1550 mm
Length	2000 mm	2150 mm
Height	2000 mm / 2200 mm	2500 mm / 2650 mm
Available area	2.80 m <sup>2</sup>	
Weight	≤ 250 kg	
Shipping Info.	40HC-Flat Pack (40 sets), Assembled (8 sets)	



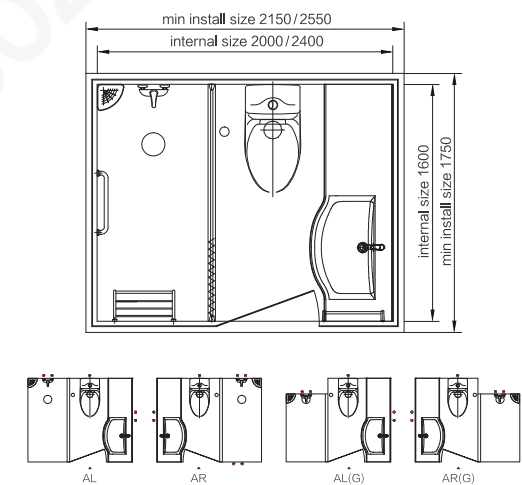
## BUL1618

Dimensions	Internal	External
Width	1600 mm	1750 mm
Length	1800 mm	1950 mm
Height	2000 mm / 2200 mm	2500 mm / 2650 mm
Available area	2.88 m <sup>2</sup>	
Weight	≤ 270 kg	
Shipping Info.	40HC-Flat Pack (35 sets), Assembled (7 sets)	



## BUL1616

Dimensions	Internal	External
Width	1600 mm	1750 mm
Length	1600 mm	1750 mm
Height	2000 mm / 2200 mm	2500 mm / 2650 mm
Available area	2.56 m <sup>2</sup>	
Weight	≤ 230 kg	
Shipping Info.	40HC-Flat Pack (35 sets), Assembled (7 sets)	



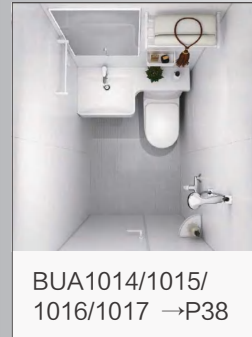
## BUL1620/1624

Dimensions	Internal	External
Width	1600 mm	1750 mm
Length	2000 mm / 2400 mm	2150 mm / 2550 mm
Height	2000 mm / 2200 mm	2500 mm / 2650 mm
Available area	3.20 / 3.84 m <sup>2</sup>	
Weight	≤ 350 kg	
Shipping Info.	40HC-Flat Pack (30 sets), Assembled (7 / 4 sets)	

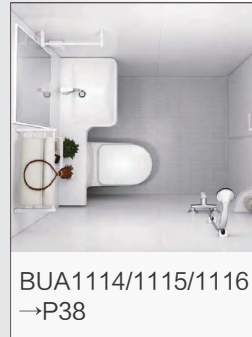


# Easy Models

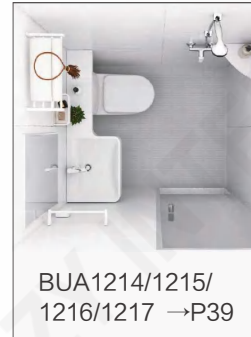
EASY SERIES  
P37-P39



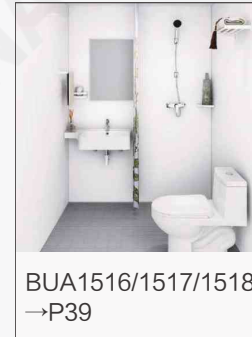
BUA1014/1015/  
1016/1017 →P38



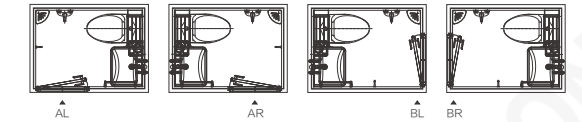
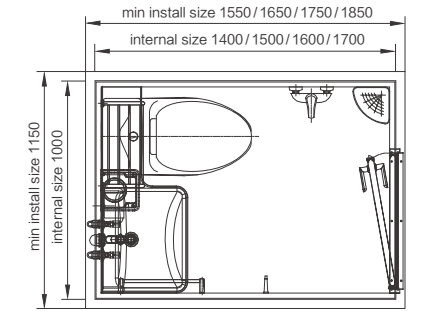
BUA1114/1115/1116  
→P38



BUA1214/1215/  
1216/1217 →P39

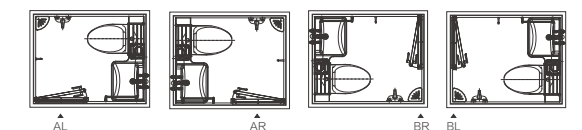
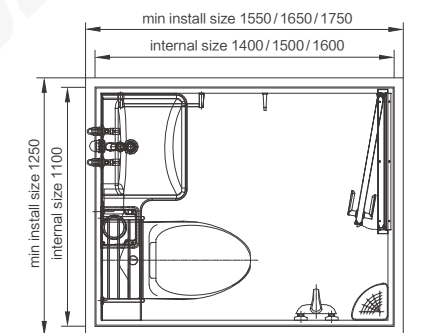


BUA1516/1517/1518  
→P39



## BUA1014 / 1015 / 1016 / 1017

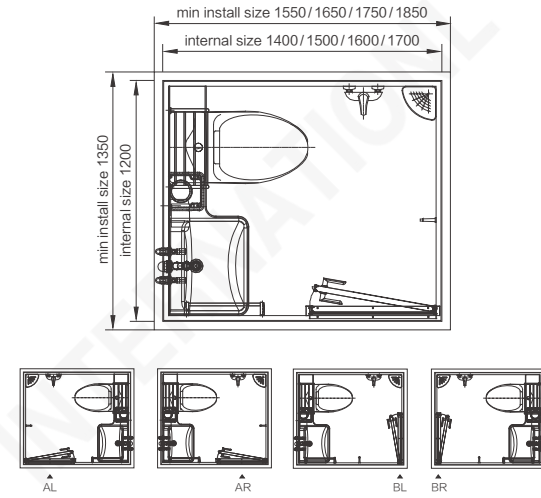
Dimensions	Internal	External
Width	1000 mm	1150 mm
Length	1400 / 1500 / 1600 / 1700 mm	1550 / 1650 / 1750 / 1850 mm
Height	2000 mm / 2200 mm	2500 mm / 2650 mm
Available area	1.4 m <sup>2</sup> / 1.5 m <sup>2</sup> / 1.6 m <sup>2</sup> / 1.7 m <sup>2</sup>	
Weight	≤ 200 kg	
Shipping Info.	40HC-Flat Pack (50 sets), Assembled (11 sets)	



## BUA1114 / 1115 / 1116

Dimensions	Internal	External
Width	1100 mm	1250 mm
Length	1400 / 1500 / 1600 mm	1550 / 1650 / 1750 mm
Height	2000 mm / 2200 mm	2500 mm / 2650 mm
Available area	1.54 m <sup>2</sup> / 1.65 m <sup>2</sup> / 1.76 m <sup>2</sup>	
Weight	≤ 220 kg	
Shipping Info.	40HC-Flat Pack (45 sets), Assembled (10 sets)	

# BU Models



## BUA1214 / 1215 / 1216 / 1217

Dimensions	Internal	External
Width	1200 mm	1350 mm
Length	1400 / 1500 / 1600 / 1700 mm	1550 / 1650 / 1750 / 1850 mm
Height	2000 mm / 2200 mm	2500 mm / 2650 mm
Available area	1.40 m <sup>2</sup>	
Weight	≤ 250 kg	
Shipping Info.	40HC-Flat Pack (40 sets), Assembled (9 sets)	



BU1012 →P41



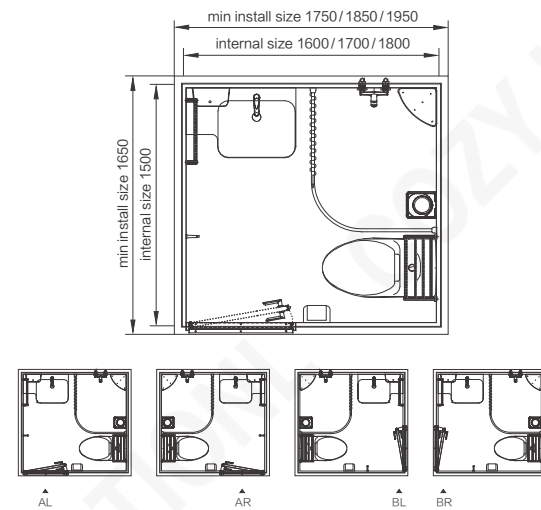
BU1016 →P41



BU1421 →P42

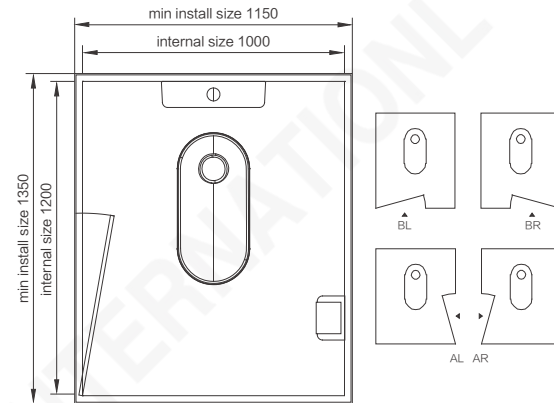


BU1421 →P42



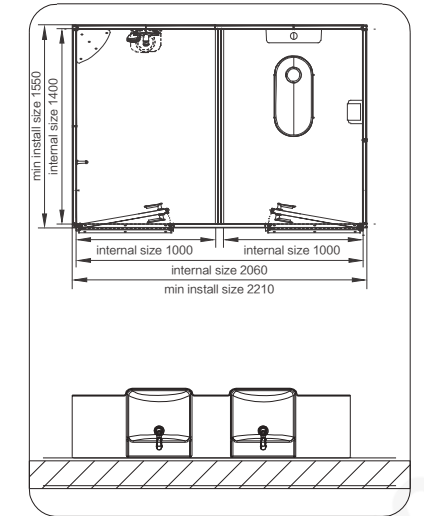
## BUA1516 / 1517 / 1518

Dimensions	Internal	External
Width	1500 mm	1650 mm
Length	1600 / 1700 / 1800 mm	1550 / 1650 / 1750 / 1850 mm
Height	2000 mm / 2200 mm	2500 mm / 2650 mm
Available area	2.40 / 2.55 / 2.70 m <sup>2</sup>	
Weight	≤ 270 kg	
Shipping Info.	40HC-Flat Pack (30 sets), Assembled (7 sets)	



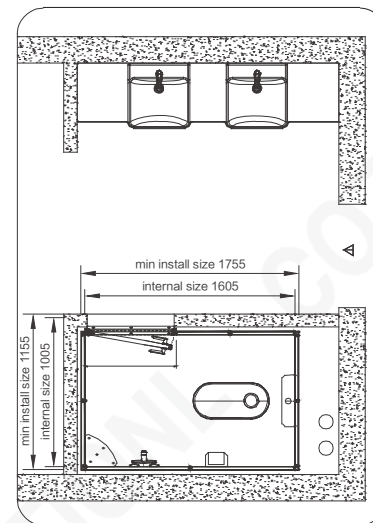
## BU1012

Dimensions	Internal	External
Width	1000 mm	1150 mm
Length	1200 mm	1350 mm
Height	2000 mm / 2200 mm	2500 mm / 2650 mm
Available area	1.2 m <sup>2</sup>	
Weight	≤ 200 kg	
Shipping Info.	40HC-Flat Pack (50 sets), Assembled (11 sets)	



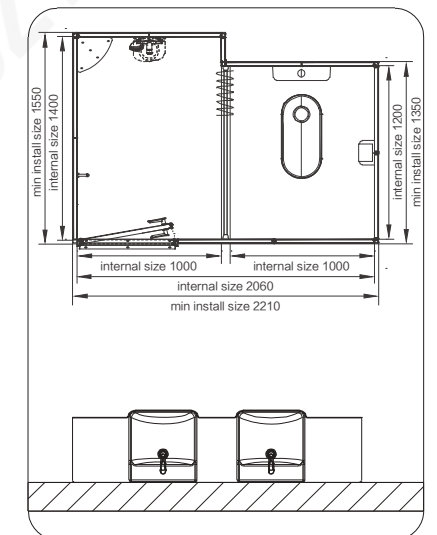
## BU1421

Dimensions	Internal	External
Width	1400 mm	1550 mm
Length	2060 mm	2210 mm
Height	2000 mm / 2200 mm	2500 mm / 2650 mm
Available area	1.40 m <sup>2</sup>	
Weight	≤ 200 kg	
Shipping Info.	40HC-Flat Pack (34 sets), Assembled (5 sets)	



## BU1016

Dimensions	Internal	External
Width	1005 mm	1155 mm
Length	1605 mm	1755 mm
Height	2000 mm / 2200 mm	2500 mm / 2650 mm
Available area	1.6 m <sup>2</sup>	
Weight	≤ 210 kg	
Shipping Info.	40HC-Flat Pack (42 sets), Assembled (11 sets)	



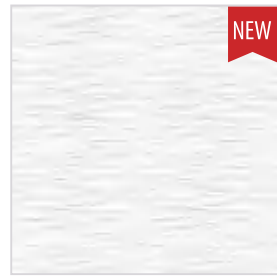
## BU1421G

Dimensions	Internal	External
Width	1400 mm	1550 mm
Length	2060 mm	2210 mm
Height	2000 mm / 2200 mm	2500 mm / 2650 mm
Available area	2.00 m <sup>2</sup>	
Weight	≤ 250 kg	
Shipping Info.	40HC-Flat Pack (34 sets), Assembled (5 sets)	



# Color Options

## SMC wall pattern Luzy/Easy/Bu series



NEW

Wavy

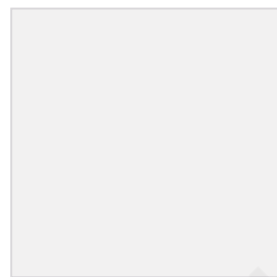


Block

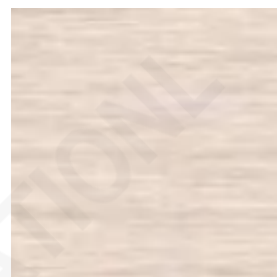


Grained Leather

## SMC wall colors Luzy/Easy/Bu series



White



Caroy Wood



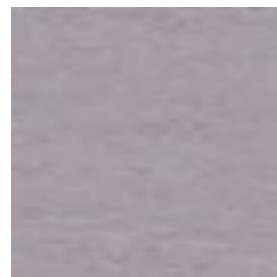
Cherry Wood



Meteor Shower



Fishbelly White



Stone



Cyan Tile



Wood



Grey



Light Oak

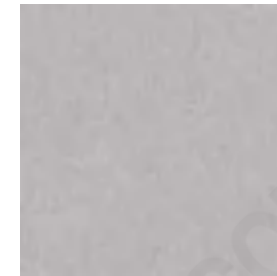


Starry Night

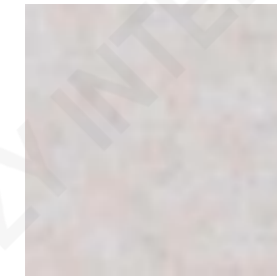


Grinded Stone

## SMC wall colors Luzy/Easy/Bu series      SMC floor colors Luzy/Easy/Bu series



Sea Fog



Creamy Apricot



Light Grey



Dark Grey

## SMC floor pattern Luzy/Easy/Bu series



Rectangle Light Gray

BUL1014/BUL1020/  
BUL1116/BUL1217/  
BUL1316/BUL1319/  
BUL1416/  
BUL1418\_dry area



Square Light Gray

BUL0816/BUL0818/  
BUL0918



Stone Pattern

BUL1218



Square Stone Pattern

BUL1220



Square sand pattern

BUL1418\_wet area/  
BUL1420\_wet area

# Standard Accessories

## \_ LUZY/EASY/BU SERIES

### Hardware



NO: 070104009  
Name: triangle soap rack  
Spec: ABS



NO: 070104086  
Name: triangle soap rack  
Spec: stainless steel



NO: 070104065  
Name: triangle soap rack



NO: 070104008  
Name: rectangle shelf  
Spec: ABS



NO: 070105006  
Name: paper holder  
Spec: ABS



NO: 070105058  
Name: paper holder  
Spec: ABS



NO: 070105108  
Name: paper holder  
Spec: stainless steel



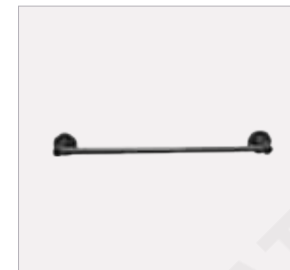
NO: 070105178  
Name: paper holder



Name: towel rail  
Spec: L=400



NO: 070102117  
Name: towel rail  
Spec: L=500, stainless steel



NO: 070101182  
Name: towel rail  
Spec: L=500mm



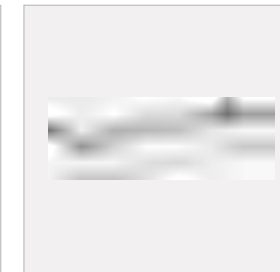
NO: 070401014  
Name: handrail  
Spec: ABS, L=400



NO: 070501022  
Name: handrail  
Spec: L=400mm



Name: shower rail  
Spec: L=400



NO: 070102116  
Name: shower rail  
Spec: L=500, stainless steel



NO: 070102126  
Name: shower rail  
Spec: L=500mm

### Exhaust Fan

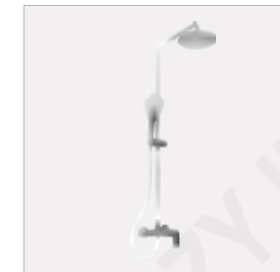


NO: 120401139  
Name: exhaust fan

### Faucet Shower



NO: 050302157  
Name: shower faucet set  
Spec: chrome plated copper

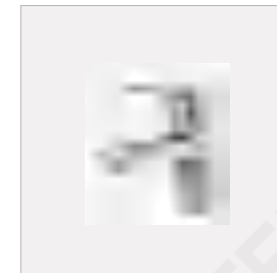


NO: 050302097  
Name: shower faucet set  
Spec: chrome plated copper



NO: 050302120  
Name: shower faucet set

### Faucet Shower



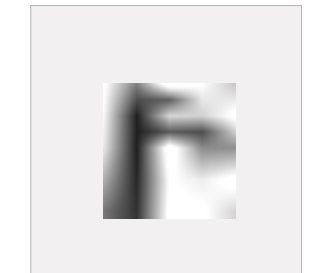
NO: 050301270  
Name: basin faucet  
Spec: chrome plated copper



NO: 070102116  
Name: basin faucet  
Spec: chrome plated copper



NO: 050301091  
Name: basin faucet  
Spec: chrome plated copper

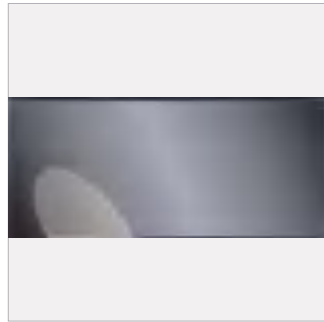


NO: 050301081  
Name: basin faucet



**\_ LUZY/EASY/BU SERIES**

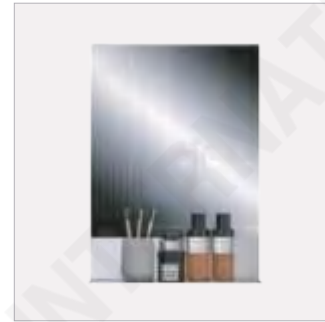
**Mirror**



NO: 091301616  
Name: mirror  
Spec: 700 × 1580mm



Name: mirror  
Spec: 500mm



Name: mirror  
Spec: 500 × 700mm

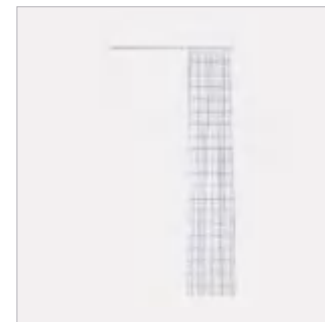
**Shower Screen**



Name: shower screen  
Spec: L = 630/680/780/880mm

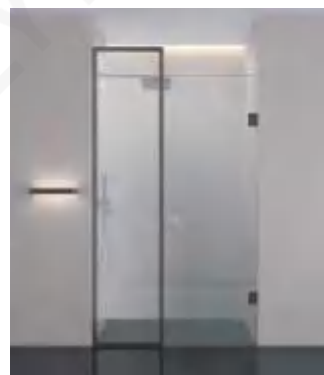


Name: shower screen  
Spec: 8mm tempered glass

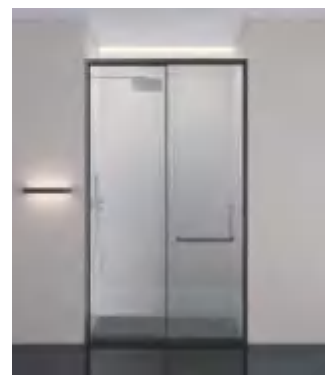


Name: shower curtain rod  
Spec: L=1300mm

**Sliding Door**



Name: Sliding glass door  
Spec: 8mm tempered glass,  
L=900/1100/1200mm

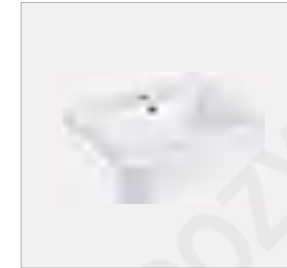


Name: Sliding glass door  
Spec: 8mm tempered glass,  
L=900/1100/1200mm



Name: Sliding glass door  
Spec: 8mm tempered glass,  
L=1300/1400/1600mm

**Basin**



Name: ceramic wash basin  
Spec: black



Name: wash basin  
Spec: L=500mm, black

**Ceramic Toilet**

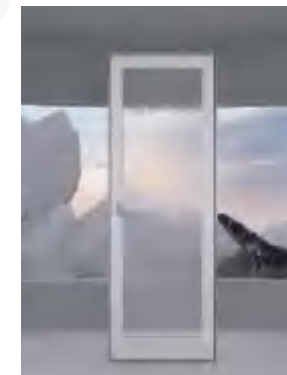


NO: 050101601  
Name: toilet (618 series)



NO: 050101861  
Name: toilet 1368

**Bathroom Door**



Name: PC door



Name: bathroom door



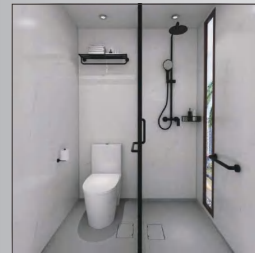
Name: glass door



Name: PC door

# HOZY Models

HOZY SERIES  
P49-P54



BUH1216 →P50



BUH1316 →P50



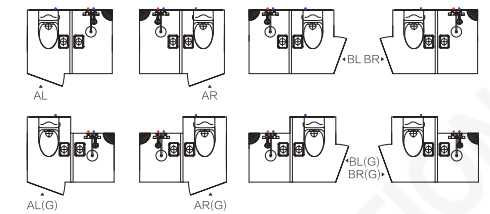
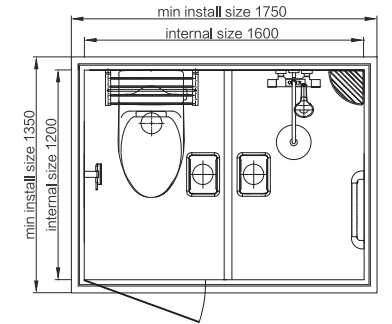
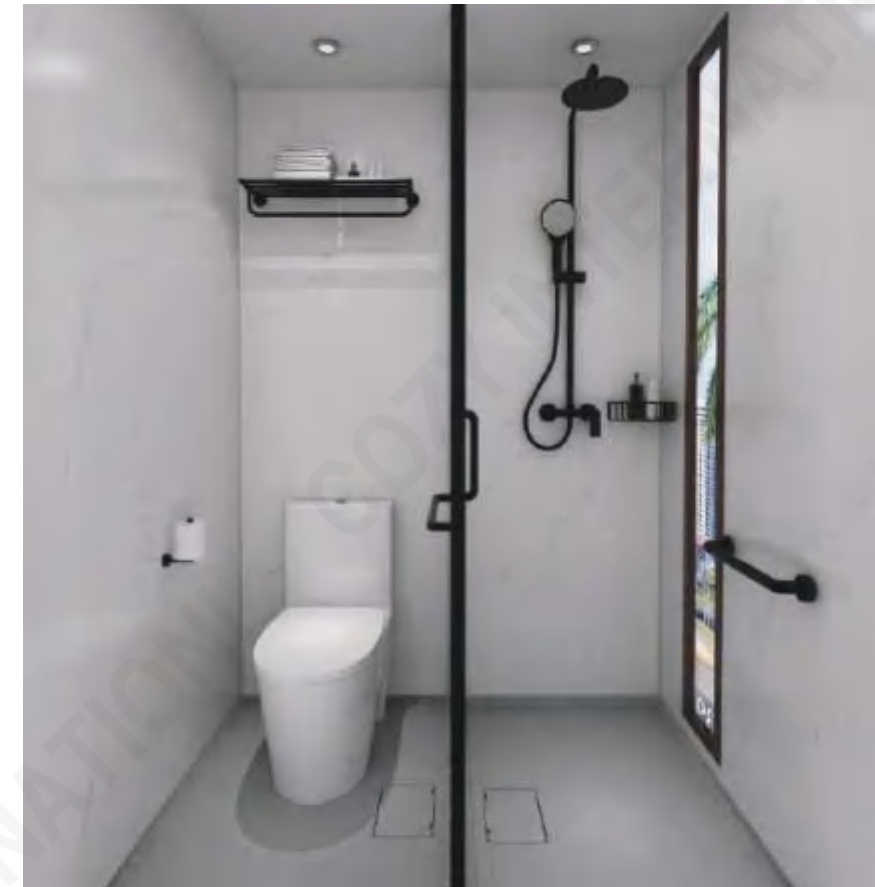
BUH1416 →P51



BUH1418 →P51

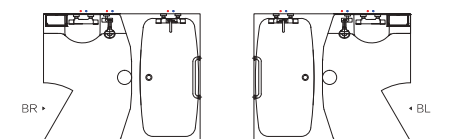
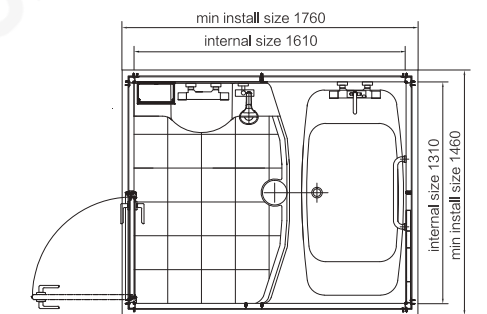


BUH1420/1620 →P52



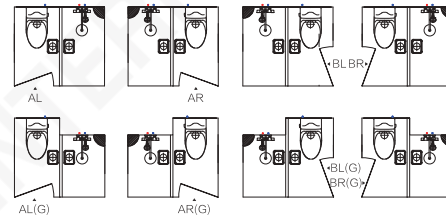
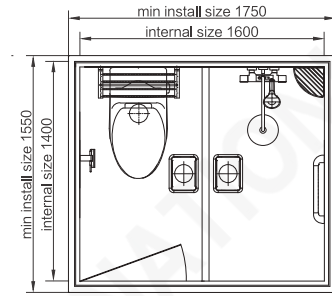
## BUH1216

Dimensions	Internal	External
Width	1200 mm	1350 mm
Length	1600 mm	1750 mm
Height	2300 mm	2600 mm / 2750 mm
Available area	1,92 m <sup>2</sup>	
Weight	≤ 240 kg	
Shipping Info.	40HC-Flat Pack ( 40 sets ), Assembled ( 9 sets )	



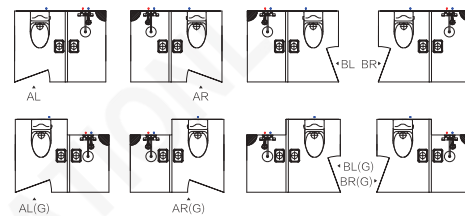
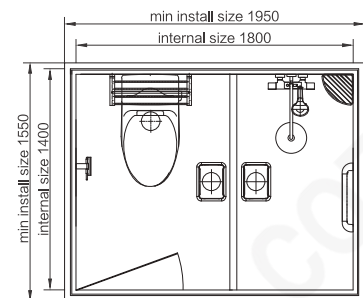
## BUH1316

Dimensions	Internal	External
Width	1310 mm	1460 mm
Length	1610 mm	1760 mm
Height	2100 mm	2750 mm
Available area	2,08 m <sup>2</sup>	
Weight	≤ 250 kg	
Shipping Info.	40HC-Flat Pack ( 22 set ), Assembled ( 8 sets )	



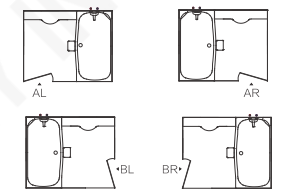
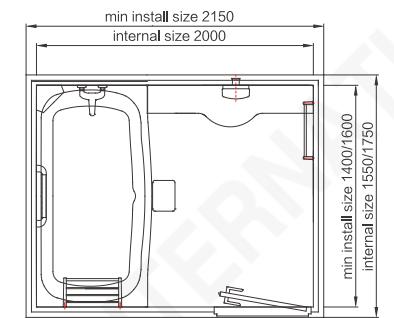
## BUH1416

Dimensions	Internal	External
Width	1400 mm	1550 mm
Length	1600 mm	1750 mm
Height	2300 mm	2600 mm / 2750 mm
Available area	2,24 m <sup>2</sup>	
Weight	≈ 260 kg	
Shipping Info.	40HC-Flat Pack (30 sets), Assembled (8 sets)	



## BUH1418

Dimensions	Internal	External
Width	1400 mm	1550 mm
Length	1800 mm	1950 mm
Height	2300 mm	2600 mm / 2750 mm
Available area	2,52 m <sup>2</sup>	
Weight	≈ 270 kg	
Shipping Info.	40HC-Flat Pack (35 sets), Assembled (8 sets)	



## BUH1420/1620

Dimensions	Internal	External
Width	1400mm / 1600 mm	1550mm / 1750 mm
Length	2000 mm	2150 mm
Height	2300 mm	2600 mm / 2750 mm
Available area	2,80 / 3,20 m <sup>2</sup>	
Weight	≈ 320 kg	
Shipping Info.	40HC-Flat Pack (26 / 24 sets), Assembled (8 / 7 sets)	



# Color Options

## SMC wall colors Hozy series



Mirror Light Oak



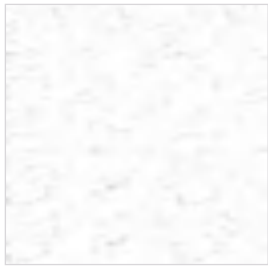
Mirror Sea Fog



Mirror Dover Stone



Fishbelly White



Mirror Jazz White

## SMC floor colors Hozy series



Gridding Light Gray

BUH1420/BUH1620



Squares Light Gray

BUH1216/BUH1416/BUH1418

# Standard Accessories

## HOZY SERIES

### Hardwares



NO: 070104065  
Name: triangle soap rack  
Spec: black



NO: 070101182  
Name: towel rail  
Spec: black L=500mm



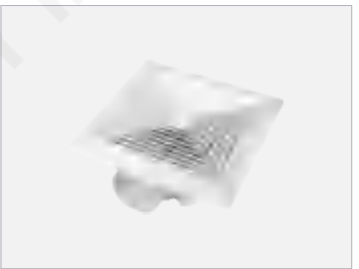
NO: 070102126  
Name: shower rail  
Spec: black L=500mm



NO: 070501022  
Name: handrail  
Spec: black L=400mm



NO: 070105178  
Name: paper holder  
Spec: black



NO: 120401064  
Name: exhaust fan  
Spec: white

### Faucet Shower



NO: 050302120  
Name: shower faucet set  
Spec: black



NO: 050301081  
Name: basin faucet  
Spec: black



Name: wash basin  
Spec: ceramic white

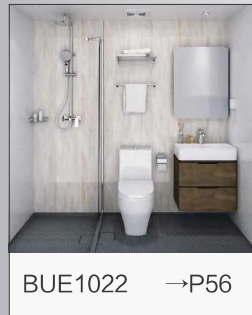
### Ceramic Toilet



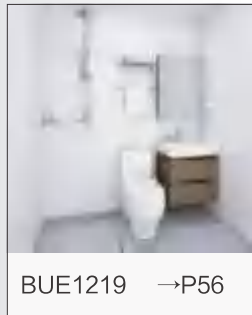
No: 050101205  
Name: toilet  
Spec: top press 8651 series

# ENJOY Models

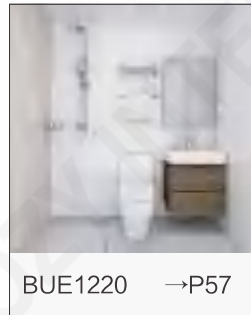
P55-P59  
ENJOY SERIES



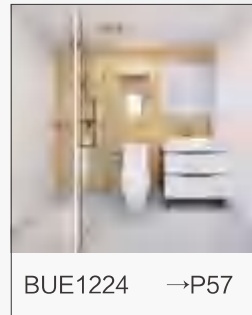
BUE1022 →P56



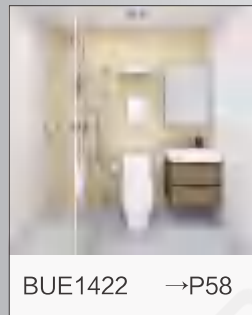
BUE1219 →P56



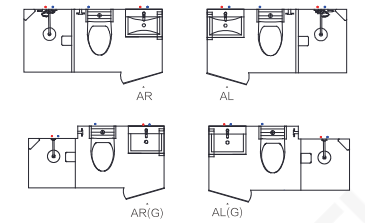
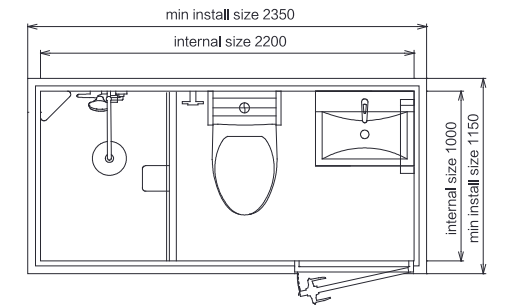
BUE1220 →P57



BUE1224 →P57

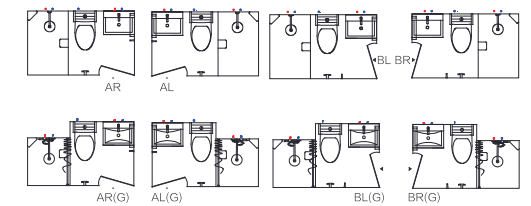
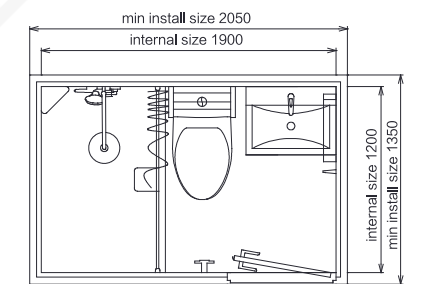
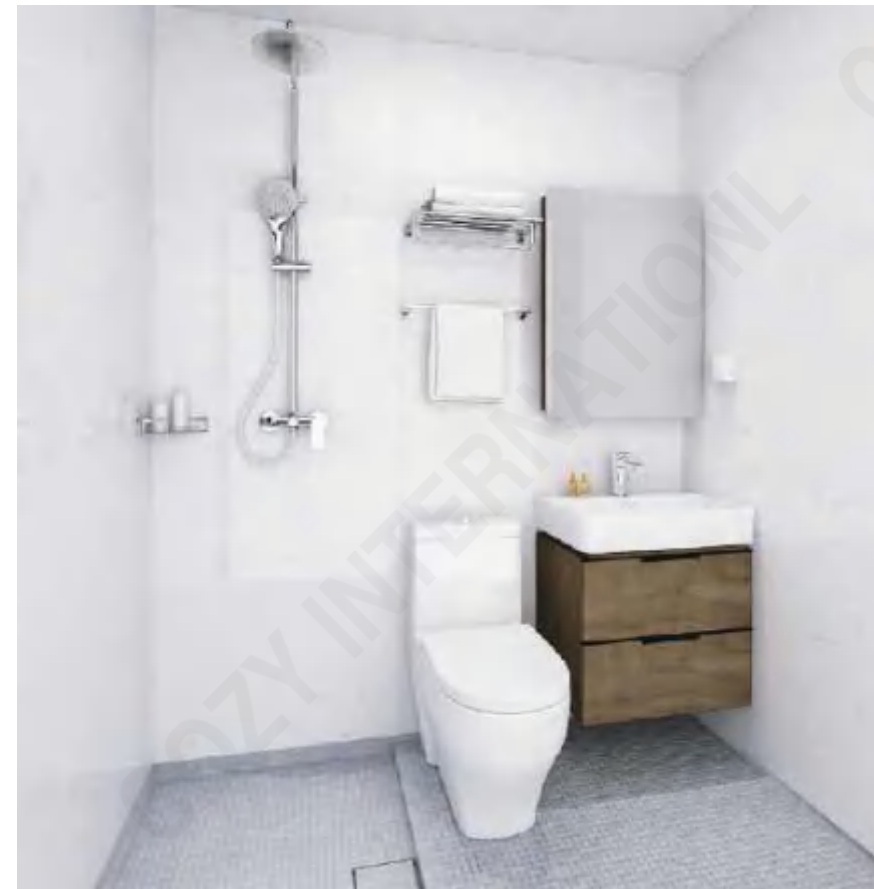


BUE1422 →P58



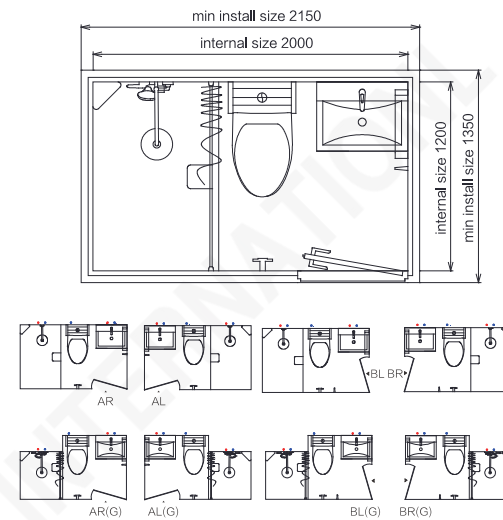
## BUE1022

Dimensions	Internal	External
Width	1000 mm	1150 mm
Length	2200 mm	2350 mm
Height	2000 mm / 2200 mm	2500 mm / 2650 mm
Available area	2,20 m <sup>2</sup>	
Weight	≤ 240 kg	
Shipping Info.	40HC-Flat Pack (40 sets), Assembled (5 sets)	



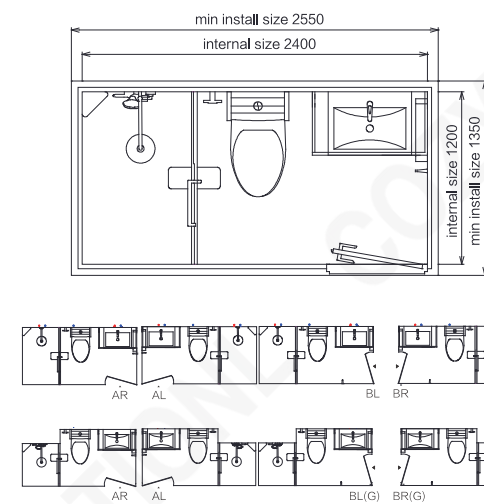
## BUE1219

Dimensions	Internal	External
Width	1200 mm	1350 mm
Length	1900 mm	2050 mm
Height	2000 mm / 2200 mm	2500 mm / 2650 mm
Available area	2,28 m <sup>2</sup>	
Weight	≤ 250 kg	
Shipping Info.	40HC-Flat Pack (35 sets), Assembled (9 sets)	



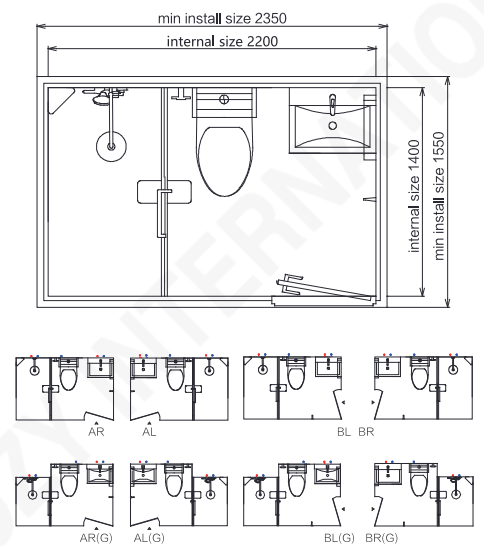
## BUE1220

Dimensions	Internal	External
Width	1200 mm	1350 mm
Length	2000 mm	2150 mm
Height	2000 mm / 2200 mm	2500 mm / 2650 mm
Available area	2.40 m <sup>2</sup>	
Weight	≤270 kg	
Shipping Info.	40HC-Flat Pack (35 sets), Assembled (9 sets)	



## BUE1224

Dimensions	Internal	External
Width	1200 mm	1350 mm
Length	2400 mm	2550 mm
Height	2000 mm / 2200 mm	2500 mm / 2650 mm
Available area	2.88 m <sup>2</sup>	
Weight	≤300 kg	
Shipping Info.	40HC-Flat Pack (25 sets), Assembled (4 sets)	



## BUE1422

Dimensions	Internal	External
Width	1400 mm	1550 mm
Length	2200 mm	2350 mm
Height	2000 mm / 2200 mm	2500 mm / 2650 mm
Available area	3.08 m <sup>2</sup>	
Weight	≤330 kg	
Shipping Info.	40HC-Flat Pack (32 sets), Assembled (5 sets)	



# Color Options

## SMC wall colors

Enjoy series



Mirror Stone



Mirror Teak Wood



Mirror Wood Stone



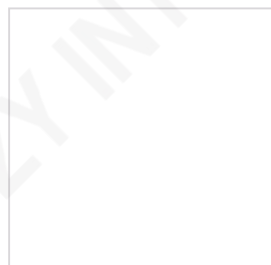
Mirror Jazz White



Fishbelly White

## SMC wall texture

Enjoy series



Mirror



Plica Ivory



Square Light Gray



Square Deep Gray

## SMC floor colors

Enjoy series

# ANZY Models

P60-P63  
ANZY SERIES



BUN1218 →P61



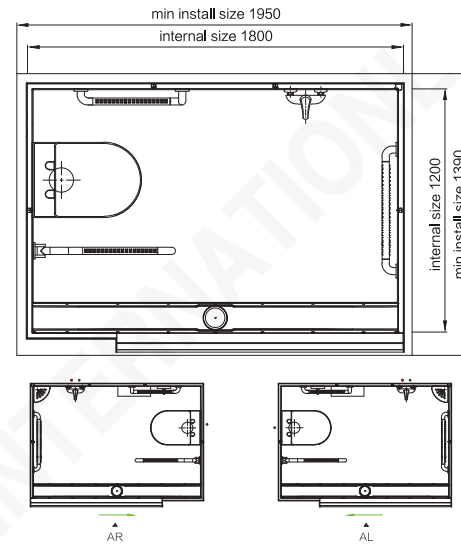
BUN1418 →P61



BUN1622 →P62

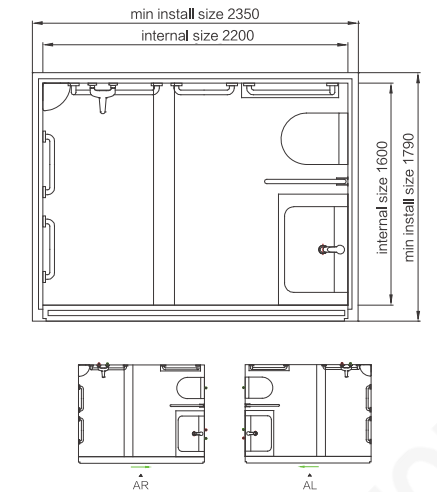


BUN1624 →P62



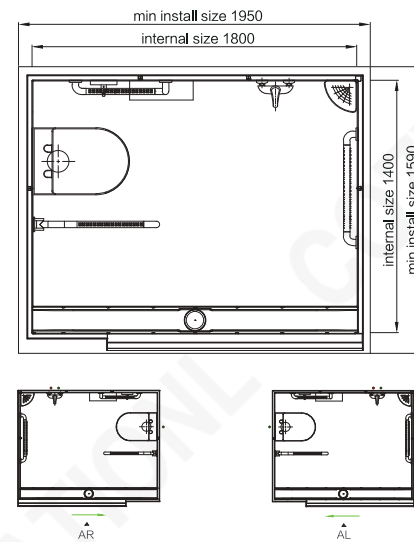
## BUN1218

Dimensions	Internal	External
Width	1200 mm	1390 mm
Length	1800 mm	1950 mm
Height	2200 mm / 2300 mm	2650 mm / 2750 mm
Available area	2.16 m <sup>2</sup>	
Weight	≤ 260 kg	
Shipping Info.	40HC-Flat Pack (40 sets), Assembled (9 sets)	



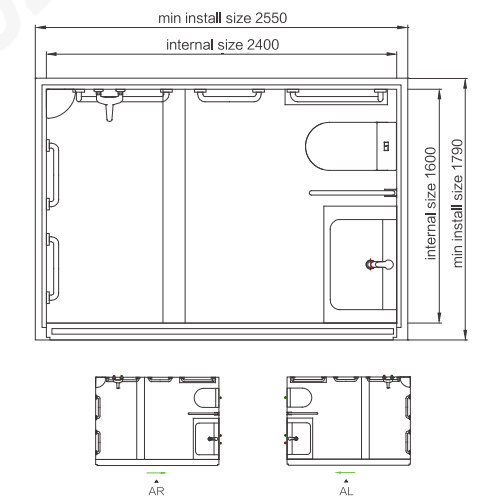
## BUN1622

Dimensions	Internal	External
Width	1600 mm	1790 mm
Length	2200 mm	2350 mm
Height	2200 mm / 2300 mm	2650 mm / 2750 mm
Available area	3.52 m <sup>2</sup>	
Weight	≤ 360 kg	
Shipping Info.	40HC-Flat Pack (26 sets), Assembled (5 sets)	



## BUN1418

Dimensions	Internal	External
Width	1400 mm	1590 mm
Length	1800 mm	1950 mm
Height	2200 mm / 2300 mm	2650 mm / 2750 mm
Available area	2.52 m <sup>2</sup>	
Weight	≤ 270 kg	
Shipping Info.	40HC-Flat Pack (35 sets), Assembled (8 sets)	



## BUN1624

Dimensions	Internal	External
Width	1600 mm	1790 mm
Length	2400 mm	2550 mm
Height	2200 mm / 2300 mm	2650 mm / 2750 mm
Available area	3.84 m <sup>2</sup>	
Weight	≤ 370 kg	
Shipping Info.	40HC-Flat Pack (25 sets), Assembled (4 sets)	

# Color Options

## SMC wall colors

Anzy series



Light oak



Caroy Wood



Cherry Wood



Light Yellow Cameo



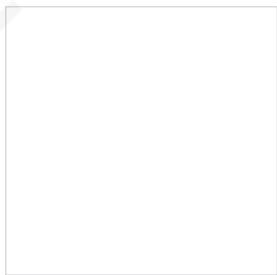
Mirror Jazz White



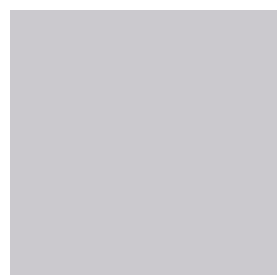
Fishbelly White

## SMC floor colors

Anzy series



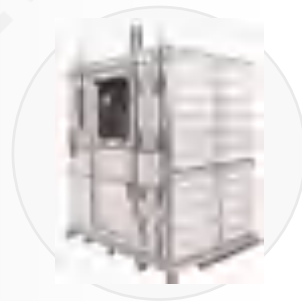
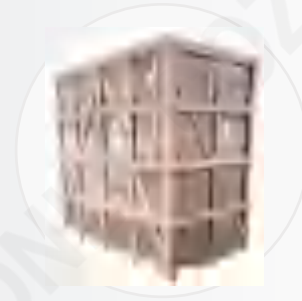
White



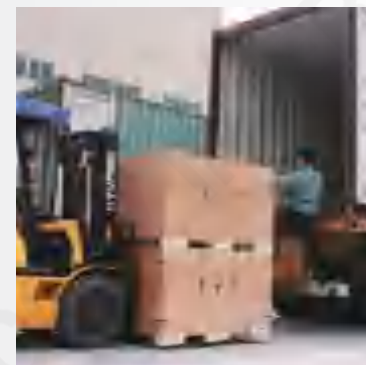
Light Gray

# Packing&Transportation

## 40HC-Assembled



## 40HC-Flat Packing





# Industrialized Production

- 30 production lines of prefab bathroom unit
- 40 sets of presses
- 390 sets of moulds
- 500,000 sets—design capacity
- 100,000 sets—annual output
- 270 sets—daily production
- 3 thousand ton per year of production capacity for SMC raw materials



SMC production line



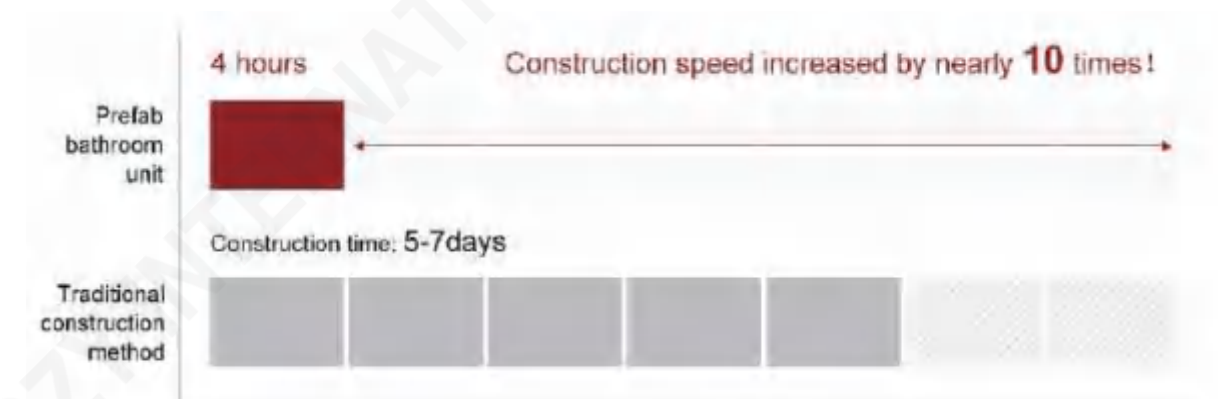
Wall / Floor Steelmold



Wood production line

# Fast Installation

Using dry construction and "building blocks" installation, a complete bathroom can be installed in 4 hours.



# Whirlpool Drain

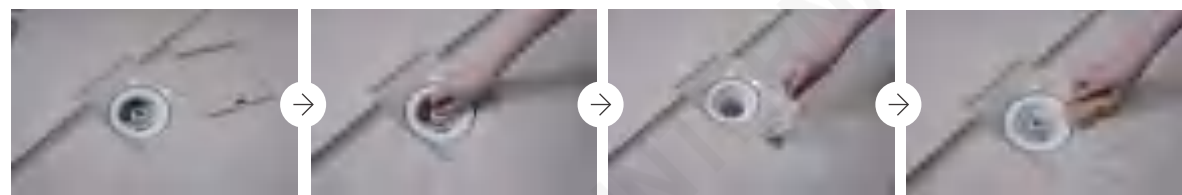
Cozy drain uses international leading technology, with anti blocking function. Floor drain rate is higher than the national standard and more scientific.



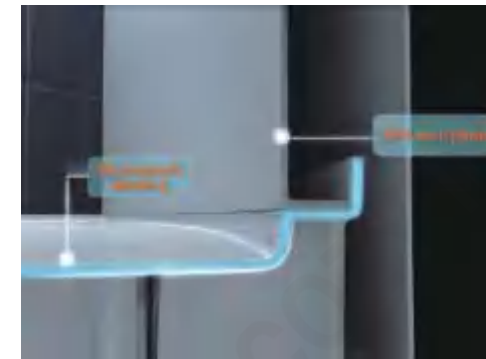
## Floor drain to prevent odor

With a 50-70mm drain water seal, it prevents the smelly from the sewage pipes. Prevent back odor and keep the air fresh.

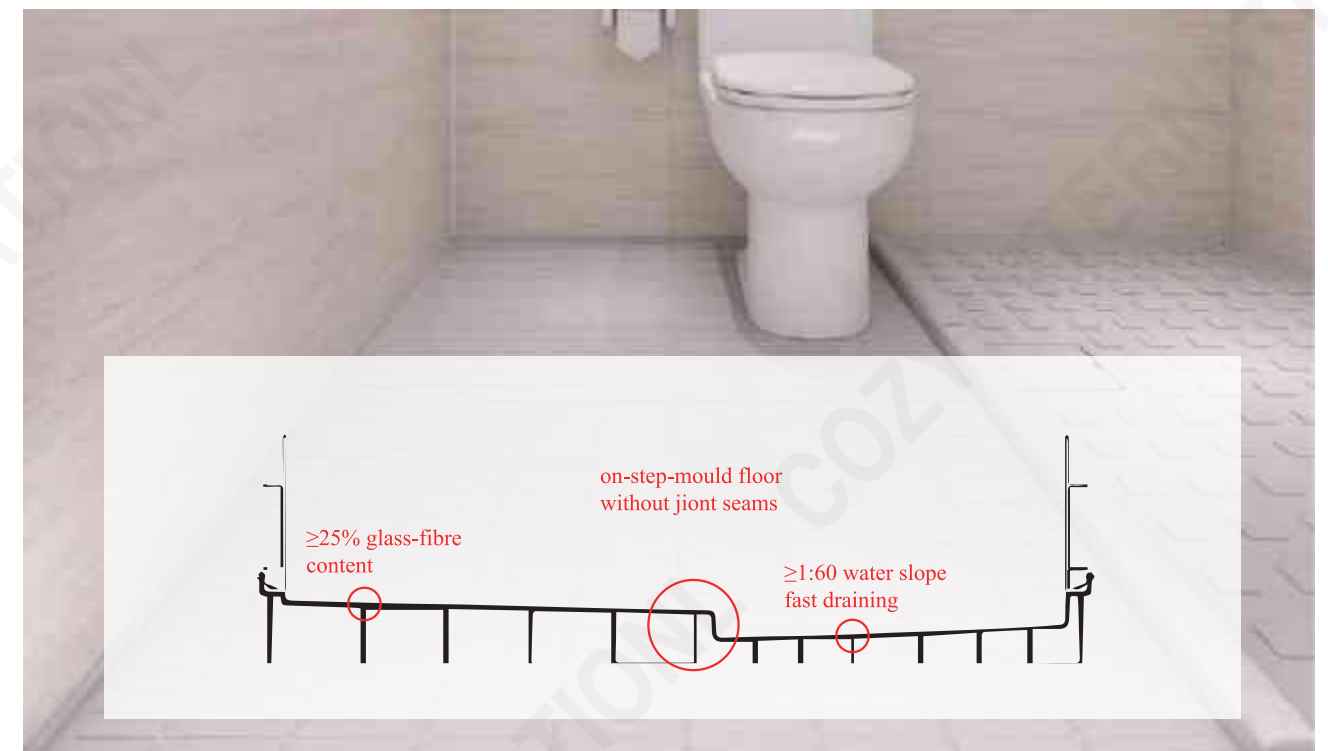
## Quick clean up step



# Waterproof Floor

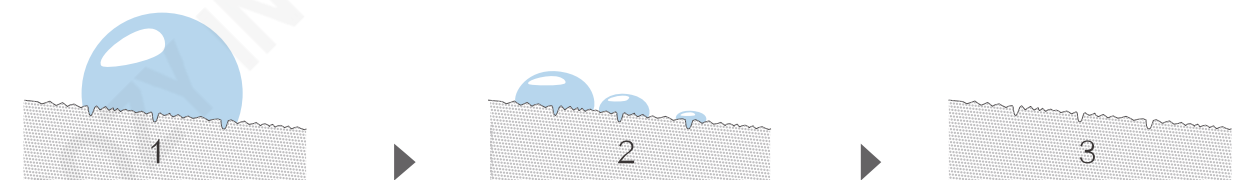


Waterproof floor is press by molding in one-step, with unique turn-ups water lock design, no leakage, eradicate the problems of traditional bathroom leakages.



## Anti-slip finish/water slope

COZY' s SMC waterproof floor uses mosaic patterns to break the tension of the water and increase the contact area of the surface with the water droplets. The water flows faster, with less water accumulation.



COZY' s SMC waterproof floor slope is 10%-16%, facilitates the flow of water, rapid drainage.



# Six Application Fields



Ibis Hotel



Beijing Lecheng Retirement Apartment



Vanke Real Estate



Peking University First Hospital



Antarctic Modular House Project



New Century Cruise Group

# Overseas Market



COZY has established a network of over 100 sales offices domestic and abroad.

<b>Asia</b>	Mongolia, South Korea, Japan, Philippines, Vietnam, Cambodia, Myanmar, Thailand, Malaysia, Singapore, Indonesia, India, Pakistan, Kazakhstan, Oman
<b>Europe</b>	Russia, Germany, England, Netherlands, France, Italy
<b>North America</b>	United States, Canada
<b>South America</b>	Columbia, Ecuador
<b>Africa</b>	Angola, Chad, South Sudan, Kenya, Mozambique, Zambia
<b>Oceania</b>	Australia, Papua New Guinea
<b>Antarctican</b>	Antarctic Project



# Technical Information

Diagram for panels connection

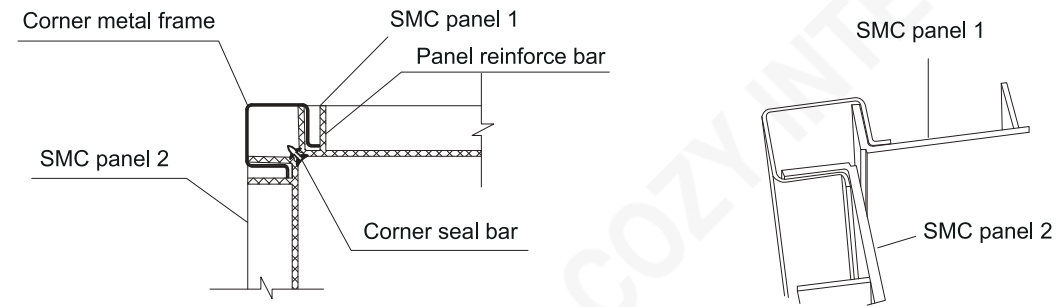
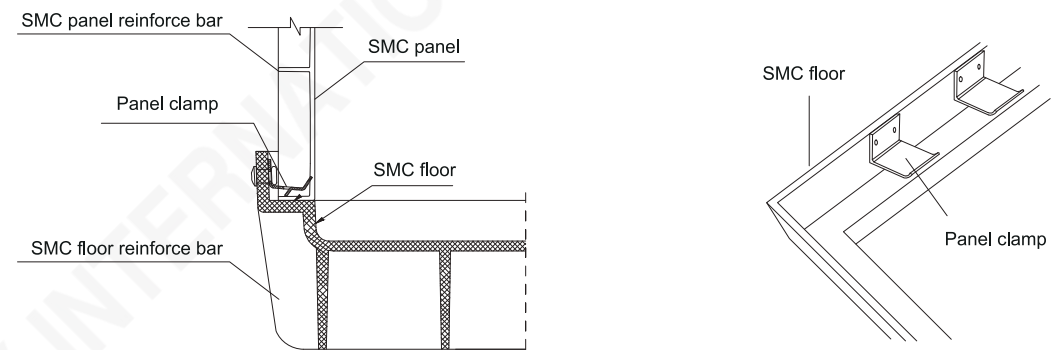
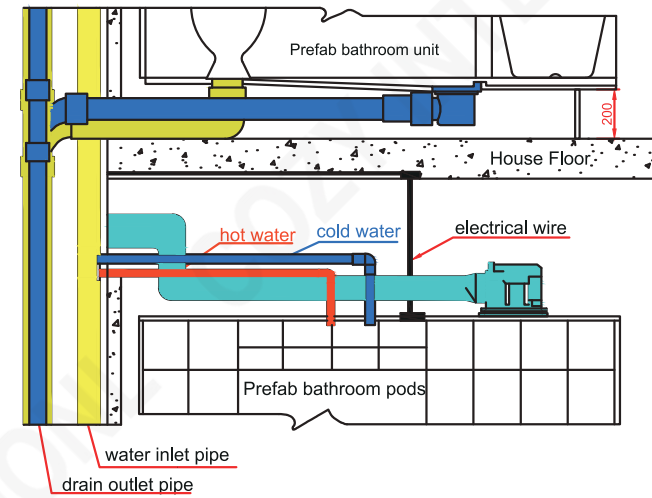
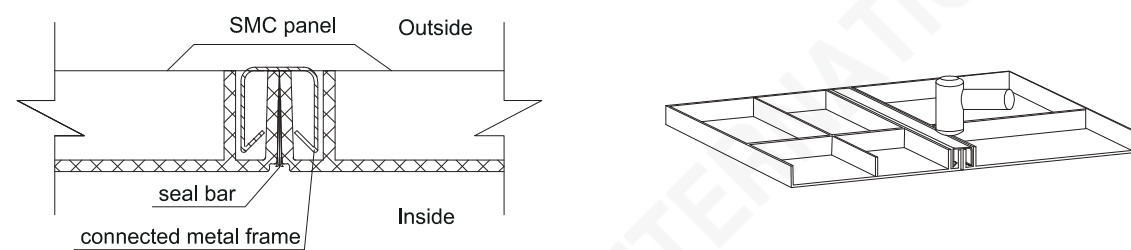


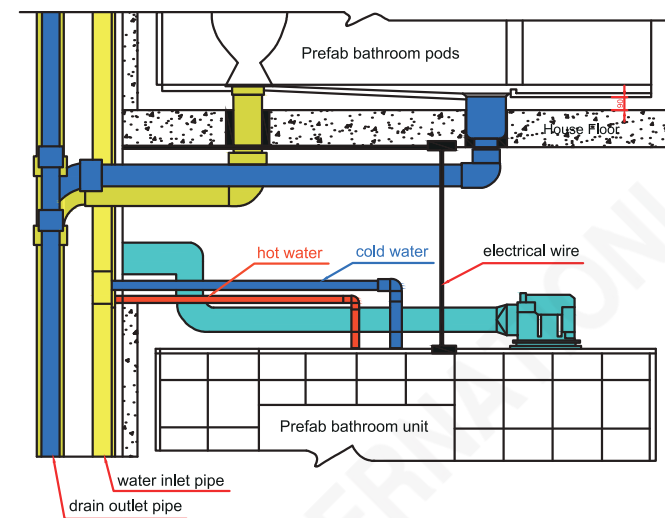
Diagram for panel and floor



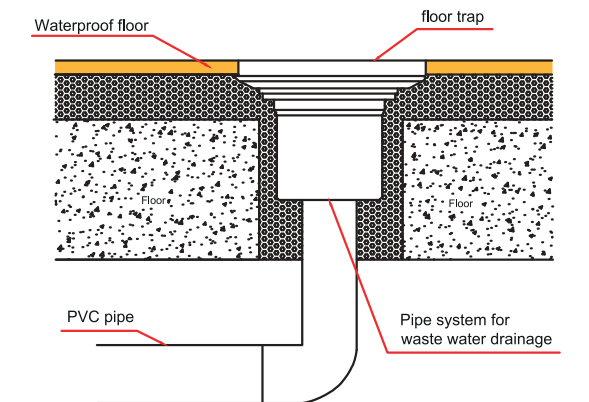
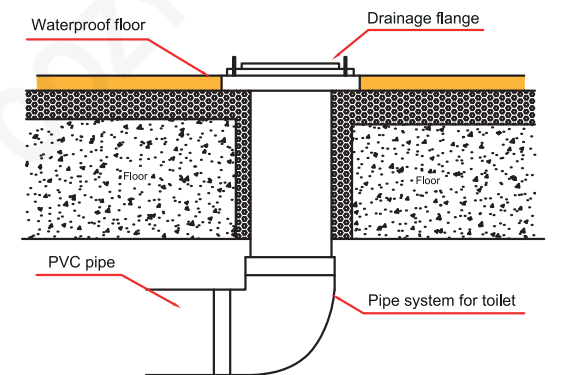
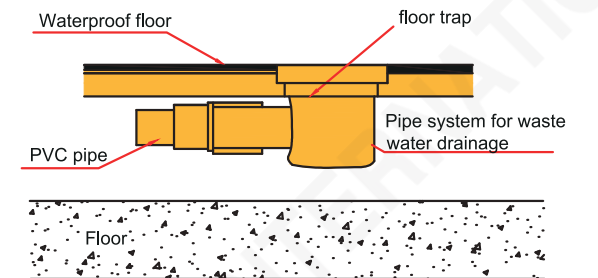
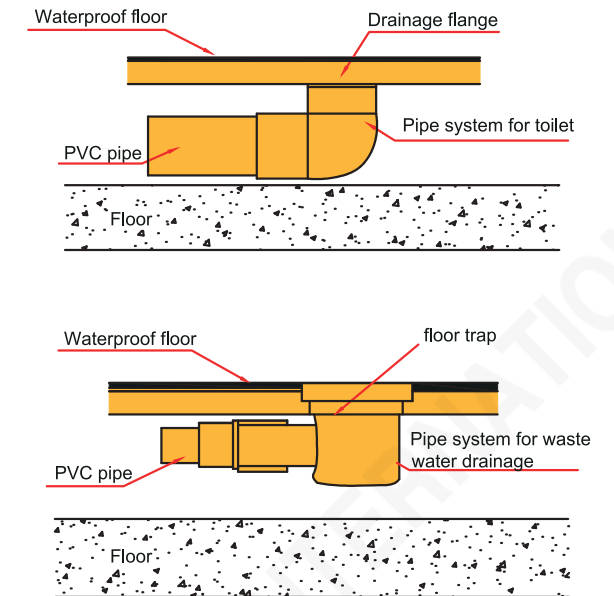
Panel installation structure



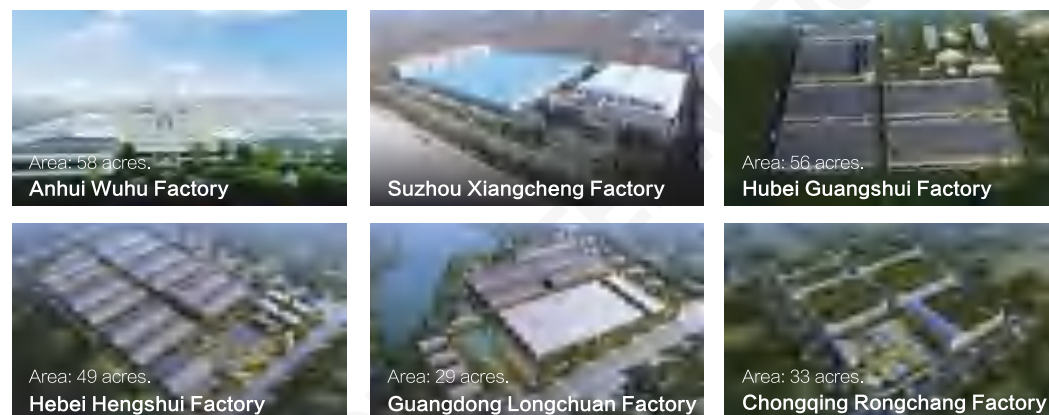
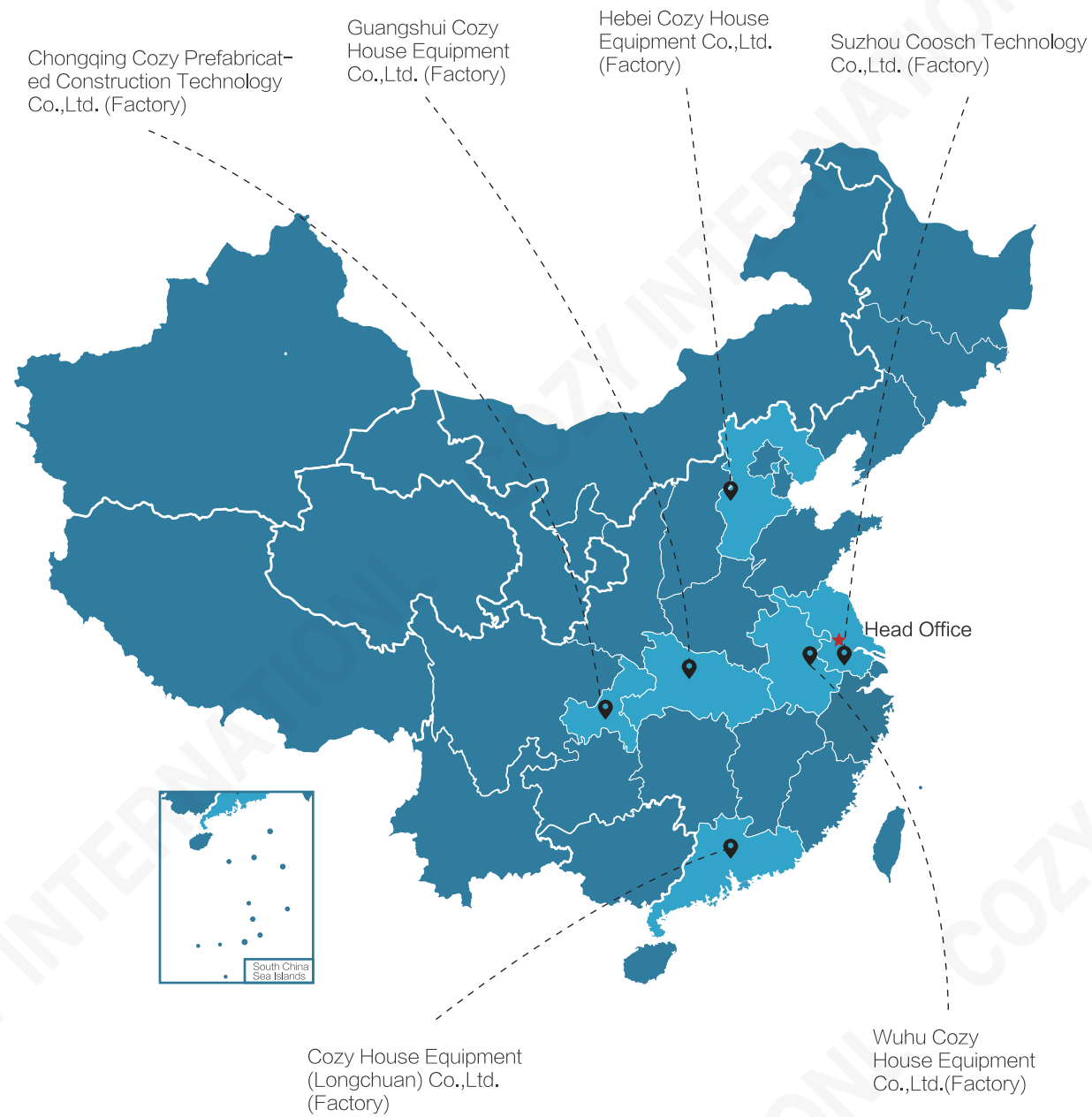
Horizontal drain style



Vertical drain style



# Six Factories

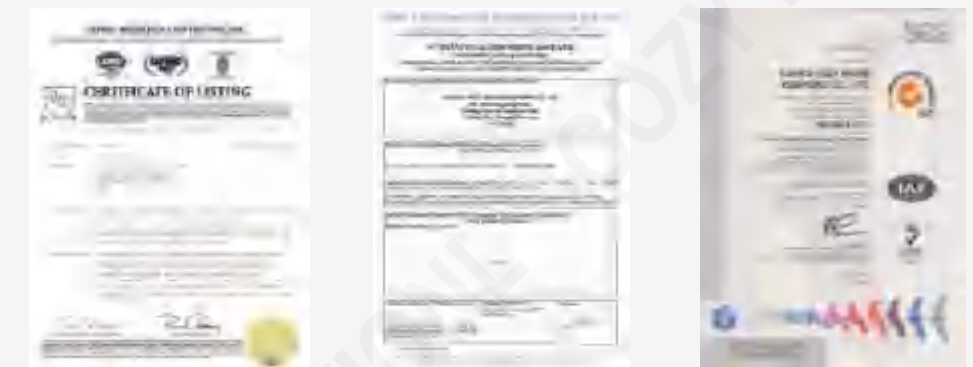


# Company Profile

Suzhou Cozy International House Tech Co.,Ltd is located in Suzhou Industrial Park, Jiangsu province, a garden city adjacent to Shanghai.

Established in **2006**, we now own six manufacturing bases respectively with a land area of about **800,000** square meters in total. Now we have **30** standardized production lines with generally **1,500** working staffs. Professional in the manufacturing of **prefab bathroom unit, prefab kitchen, shower tray and shower walls**, we've been large scale enterprises worldwide. Until now we owns more than **40 percent** of share in domestic market and supplies prefab bathroom units to more than **30 countries** all around the world, covering the fields of **hotels, apartments, hospitals, etc.** obtaining consistently high praise from customers.

COZY always upholds entrepreneur spirits to achieve a healthy and civilized life style, is making no efforts to promoting the industrialization and modernization of buildings. We sincerely welcome you to visit our company and contact us for cooperation.



**157+** uthorized patents

**70** design patents

**31** patents of invention

**86** copyright patents

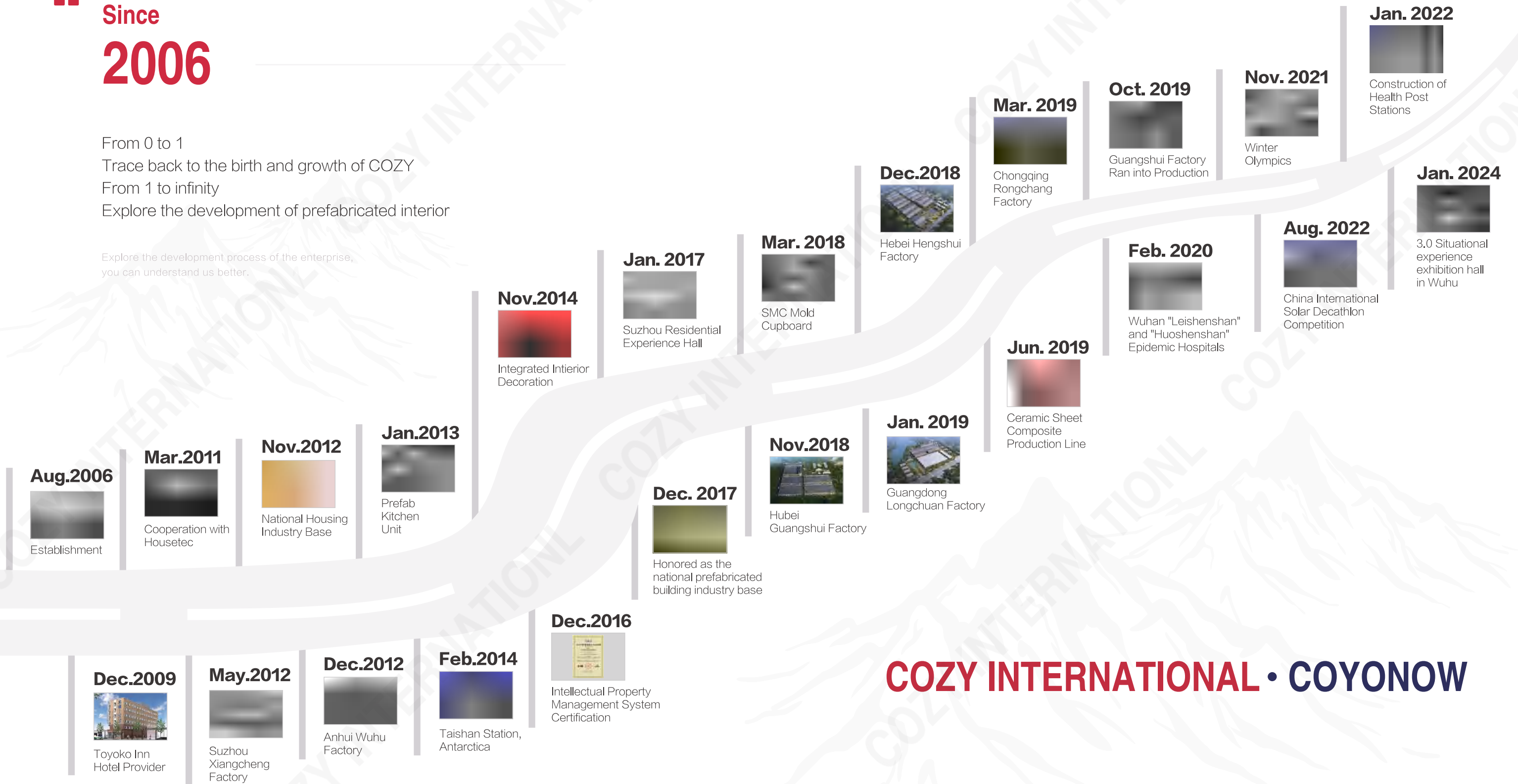
**56** patents for utility models

# History

“ Since **2006**

From 0 to 1  
Trace back to the birth and growth of COZY  
From 1 to infinity  
Explore the development of prefabricated interior

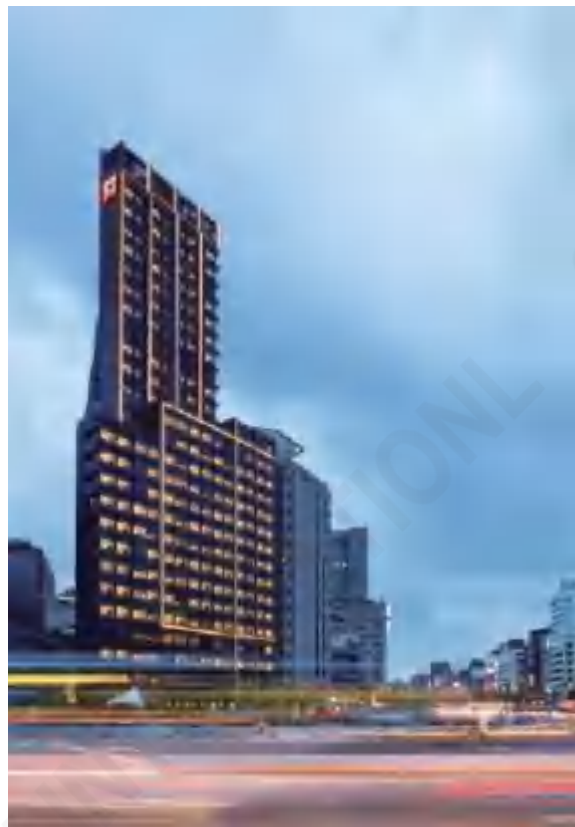
Explore the development process of the enterprise, you can understand us better.



**COZY INTERNATIONAL • COYONOW**



# Projects



## CitizenM

CitizenM Hotel is a new-style Dutch hotel group that aims to provide travelers with world-class luxury and comfort in the central city. Since 2013, the Taiwan branch and Shanghai branch of Asia's first store have successfully used bathroom units. Our company has accumulated a good reputation in the industry by virtue of fast delivery, reliable quality and good service.



## IBIS hotel

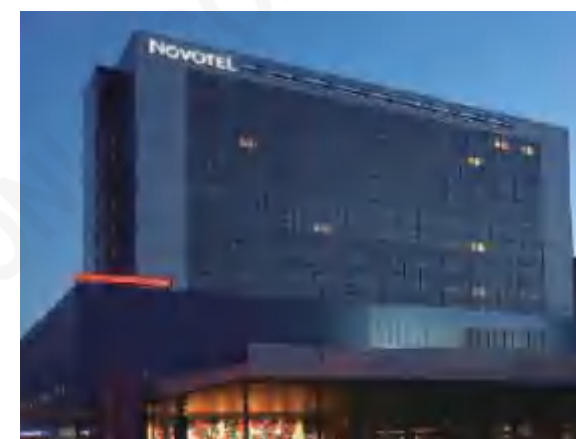
The French Accor Group is one of the world's largest hotel management groups and a leader in the European hotel industry. It has more than 4,000 hotels in 90 countries, and its brands include Sofitel, Novotel, and Ibis. Our company has provided more than 5,000 sets of bathroom units for nearly 30 Ibis hotels.



## Toyoko INN hotel

Toyoko inn hotel group is Japan's largest business hotel group. Before cooperating with our company, Toyoko has been working with Hitachi for 20 years. With stable quality, fast delivery and good service, our company got the chance to work with Toyoko, which gave up 20 years cooperation with Hitachi.

Since 2010, our company became global only designated bathroom supplier for Toyoko, and already delivered to Japan at nearly 20000 sets so far.



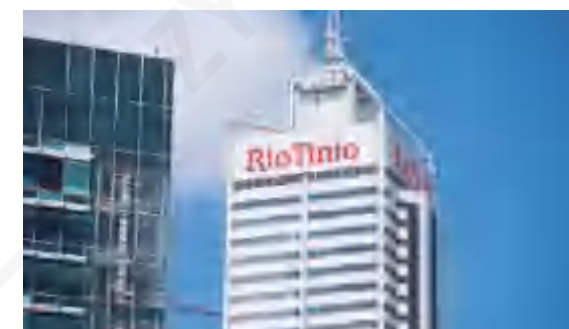
## NOVOTEL

Novotel Hotel is under the French Accor Group. The design of the hotel takes into account both aesthetic value and practical function. It shows a modern atmosphere but can be called a classic. It is simple, simple and formal. When you come to Novotel, you can enjoy a good life anytime, anywhere. Since 2015, our company has provided more than 1,000 sets of bathroom units to Novotel Hotel (Hefei Wanda, Anhui).



## Mercure

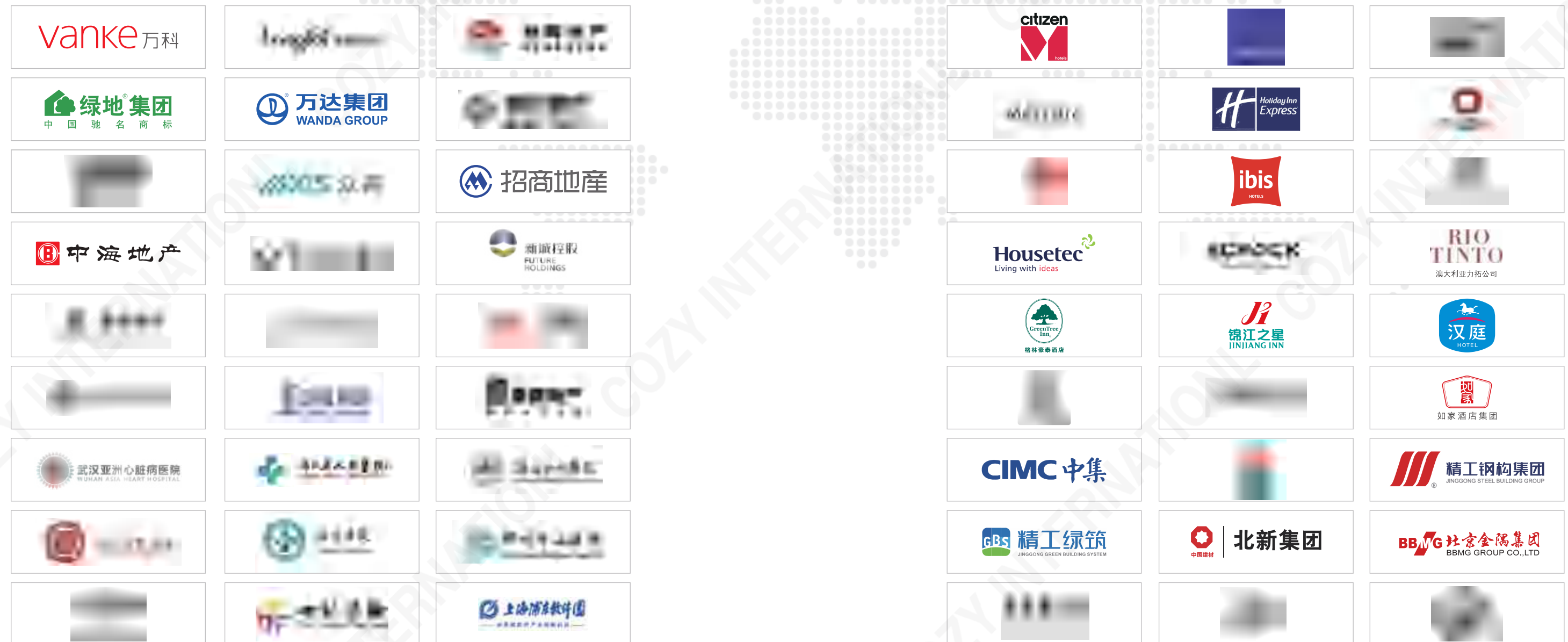
Mercure is a non-standard mid-range hotel brand under the AccorHotels Group. It is the first multi-brand chain hotel management group in China. It has more than 3,000 hotels in more than 360 cities in China.



## RIOTINTO

Several influential mining companies in the world acquired the Northern Mining Corporation of Australia in 2000, becoming a leader in the exploration, mining and processing of mineral resources and one of the iron ore companies. Part of the staff dormitory adopts the container house model, and all of them use the bathroom units.

# Partners



P.S. : All (names are arranged) in random order.